

Game no. 11607/169
Istanbul
Kasımpaşa Spor Kompleksi

19.02.2017 12:00
(Local time)

OFFICIAL STATISTICS

17 - 11

(17-11)

MITSUBISHI ELECTRIC (MTE)

Head coach: EMRE ALKAÇ

No.	Name	Min	FG		2P FG		3P FG		FT		Reb			AS	TO	ST	BS	PF			PTS	
			M/A	%	M/A	%	M/A	%	M/A	%	RO	RD	Tot					C	D	+/-		
*5	Buğra Bingöl	03:09	0/1	0,0	0/0	0,0	0/1	0,0	0/0	0,0	0	0	0	0	0	0	0	0	0	0	+2	0
6	Gökhan Külahi	02:50	0/1	0,0	0/0	0,0	0/1	0,0	0/0	0,0	0	0	0	0	0	0	0	0	0	0	-2	0
*7	Barkın Akın	10:00	2/6	33,3	2/4	50,0	0/2	0,0	0/0	0,0	0	1	1	0	0	3	0	2	0	+6	4	
8	Suheyli Eğil	DNP																				
10	Mustafa Soyer	06:51	2/3	66,7	0/0	0,0	2/3	66,7	0/0	0,0	1	4	5	1	1	0	0	0	0	+4	6	
12	Alican Yeterel	DNP																				
*13	Çağtay Özcan	10:00	0/0	0,0	0/0	0,0	0/0	0,0	0/0	0,0	0	0	0	1	2	0	0	0	0	+6	0	
*22	Emre Alkaç	10:00	2/3	66,7	1/1	100,0	1/2	50,0	0/0	0,0	0	1	1	4	2	1	0	0	0	+6	5	
24	Yıldırım İkisivri	DNP																				
*34	Ersan Zerir	07:10	1/2	50,0	1/2	50,0	0/0	0,0	0/0	0,0	0	1	1	1	0	0	0	1	0	+8	2	
Team/Coach											0	1	1		0			0				
Totals			7/16	43,8	4/7	57,1	3/9	33,3	0/0	0,0	1	8	9	7	5	4	0	3	0		17	

ASSAN ALUMİNYUM (ASA)

Head coach: HASAN ÇAKIR

No.	Name	Min	FG		2P FG		3P FG		FT		Reb			AS	TO	ST	BS	PF			PTS
			M/A	%	M/A	%	M/A	%	M/A	%	RO	RD	Tot					C	D	+/-	
*5	Murat Akkaş	10:00	1/4	25,0	1/4	25,0	0/0	0,0	0/0	0,0	0	2	2	1	1	2	0	0	1	-6	2
*7	Efe Kıranatlı	07:10	0/1	0,0	0/1	0,0	0/0	0,0	0/0	0,0	2	1	3	0	1	0	0	0	0	-8	0
8	Helin Açıkgöz	DNP																			
9	Erdim Evsen	DNP																			
10	Semih Adakcı	02:50	0/1	0,0	0/1	0,0	0/0	0,0	0/0	0,0	0	1	1	0	0	2	0	0	0	+2	0
*13	Oray Sönmez	08:00	1/1	100,0	1/1	100,0	0/0	0,0	0/0	0,0	2	3	5	0	1	1	0	0	1	-11	2
24	Özkan Kırımı	02:00	1/2	50,0	1/1	100,0	0/1	0,0	0/0	0,0	0	1	1	0	0	0	0	0	0	+5	2
*34	Özgün Ünal	08:00	0/6	0,0	0/6	0,0	0/0	0,0	0/0	0,0	1	0	1	0	1	0	0	0	-11	0	
61	Kemal Şahin	06:51	0/5	0,0	0/2	0,0	0/3	0,0	1/2	50,0	0	0	0	1	0	0	0	0	1	-4	1
75	Uğur Gül	DNP																			
*91	Emrah Ehlidil	05:09	2/4	50,0	2/3	66,7	0/1	0,0	0/0	0,0	3	0	3	0	2	0	0	0	0	+3	4
Team/Coach											2	0	2		0			0			
Totals			5/24	20,8	5/19	26,3	0/5	0,0	1/2	50,0	10	8	18	2	6	5	0	0	3		11

Scoring by 5 minutes intervals

	Q1	Q2	Q3	Q4
MTE	4	17		
ASA	6	11		

	MTE	ASA
Points from turnovers	4	6
Points in the paint	4	10
Second chance points	0	2
Fast break points	5	3
Bench points	6	3

	MTE	ASA
Biggest lead	11	2
Biggest scoring run	13-0 (17-6)	5-0 (17-11)
Lead changes	3	
Times tied	4	
Time Leading	05:28	01:17

Legend:

Min	Minutes played	M/A	Made/attempts	Reb	Rebounds	AS	Assists	TO	Turnovers
*	Starters	%	Shooting percentage	RD	Defensive rebounds	PF	Personal fouls	ST	Steals
DNP	Did not play	FT	Free throws	RO	Offensive rebounds	C	Committed fouls	BS	Blocked shots
FG	Field goals	PTS	Points scored	Tot	Total rebounds	D	Drawn fouls	+/-	Net points while on court

Game no. 11607/169
Istanbul
Kasımpaşa Spor Kompleksi

19.02.2017 12:00
(Local time)

OFFICIAL STATISTICS

29 - 27

(17-11, 12-16)

MITSUBISHI ELECTRIC (MTE)

Head coach: EMRE ALKAÇ

No.	Name	Min	FG		2P FG		3P FG		FT		Reb			AS	TO	ST	BS	PF			PTS	
			M/A	%	M/A	%	M/A	%	M/A	%	RO	RD	Tot					C	D	+/-		
*5	Buğra Bingöl	03:09	0/1	0,0	0/0	0,0	0/1	0,0	0/0	0,0	0	0	0	0	0	0	0	0	0	0	+2	0
6	Gökhan Külahi	07:55	0/1	0,0	0/0	0,0	0/1	0,0	0/0	0,0	0	0	0	0	0	1	0	1	0	0	-5	0
*7	Barkın Akın	17:27	2/8	25,0	2/4	50,0	0/4	0,0	0/0	0,0	0	4	4	1	2	3	0	2	0	+6	4	
8	Suheyh Eğil	08:44	1/2	50,0	1/2	50,0	0/0	0,0	0/0	0,0	0	0	0	1	1	2	0	1	0	-4	2	
10	Mustafa Soyer	13:02	2/5	40,0	0/1	0,0	2/4	50,0	0/0	0,0	1	4	5	1	1	0	0	0	0	+3	6	
12	Alican Yeterel	DNP																				
*13	Çağtay Özcan	20:00	0/2	0,0	0/2	0,0	0/0	0,0	0/0	0,0	1	2	3	1	2	0	0	1	1	+2	0	
*22	Emre Alkaç	20:00	5/10	50,0	3/6	50,0	2/4	50,0	3/3	100,0	0	1	1	4	3	2	0	0	2	+2	15	
24	Yıldırım İkisivri	02:33	0/1	0,0	0/1	0,0	0/0	0,0	0/0	0,0	0	1	1	0	2	0	0	0	0	-4	0	
*34	Ersan Zerir	07:10	1/2	50,0	1/2	50,0	0/0	0,0	0/0	0,0	0	1	1	1	0	0	0	1	0	+8	2	
Team/Coach											1	3	4	0								
Totals			11/32	34,4	7/18	38,9	4/14	28,6	3/3	100,0	3	16	19	9	11	8	0	6	3		29	

ASSAN ALUMİNYUM (ASA)

Head coach: HASAN ÇAKIR

No.	Name	Min	FG		2P FG		3P FG		FT		Reb			AS	TO	ST	BS	PF			PTS
			M/A	%	M/A	%	M/A	%	M/A	%	RO	RD	Tot					C	D	+/-	
*5	Murat Akkaş	20:00	4/10	40,0	4/10	40,0	0/0	0,0	0/0	0,0	3	5	8	4	2	4	0	1	1	-2	8
*7	Efe Kıranatlı	08:26	0/1	0,0	0/1	0,0	0/0	0,0	0/0	0,0	2	1	3	0	1	0	0	0	0	-8	0
8	Helin Açıkgöz	DNP																			
9	Erdim Evsen	DNP																			
10	Semih Adakcı	11:34	1/6	16,7	0/3	0,0	1/3	33,3	0/0	0,0	3	5	8	0	1	5	0	1	0	+6	3
*13	Oray Sönmez	09:16	1/1	100,0	1/1	100,0	0/0	0,0	0/0	0,0	2	4	6	0	1	1	0	0	2	-11	2
24	Özkan Kırımı	10:44	2/6	33,3	2/5	40,0	0/1	0,0	0/0	0,0	1	2	3	0	1	0	0	0	0	+9	4
*34	Özgün Ünal	09:21	1/7	14,3	1/7	14,3	0/0	0,0	0/0	0,0	1	0	1	0	1	0	0	0	-11	2	
61	Kemal Şahin	15:30	0/9	0,0	0/2	0,0	0/7	0,0	2/4	50,0	0	0	0	1	1	0	0	2	+0	2	
75	Uğur Gül	01:16	0/0	0,0	0/0	0,0	0/0	0,0	0/0	0,0	0	0	0	0	0	0	0	0	0	+0	0
*91	Emrah Ehlidil	13:53	3/8	37,5	3/6	50,0	0/2	0,0	0/0	0,0	6	1	7	1	3	0	0	0	1	+7	6
Team/Coach											2	0	2	0							
Totals			12/48	25,0	11/35	31,4	1/13	7,7	2/4	50,0	20	18	38	6	11	10	0	4	6		27

Scoring by 5 minutes intervals

	Q1		Q2		Q3		Q4	
MTE	4	17	20	29				
ASA	6	11	21	27				

	MTE	ASA
Points from turnovers	10	9
Points in the paint	8	18
Second chance points	0	6
Fast break points	7	11
Bench points	8	9

	MTE	ASA
Biggest lead	11	2
Biggest scoring run	13-0 (17-6)	8-0 (17-14)
Lead changes	5	
Times tied	4	
Time Leading	14:21	02:24

Legend:

Min	Minutes played	M/A	Made/attempts	Reb	Rebounds	AS	Assists	TO	Turnovers
*	Starters	%	Shooting percentage	RD	Defensive rebounds	PF	Personal fouls	ST	Steals
DNP	Did not play	FT	Free throws	RO	Offensive rebounds	C	Committed fouls	BS	Blocked shots
FG	Field goals	PTS	Points scored	Tot	Total rebounds	D	Drawn fouls	+/-	Net points while on court

Game no. 11607/169
Istanbul
Kasımpaşa Spor Kompleksi

19.02.2017 12:00
(Local time)

OFFICIAL STATISTICS

57 - 40

(17-11, 12-16, 28-13)

MITSUBISHI ELECTRIC (MTE)

Head coach: EMRE ALKAÇ

No.	Name	Min	FG		2P FG		3P FG		FT		Reb			AS	TO	ST	BS	PF			PTS	
			M/A	%	M/A	%	M/A	%	M/A	%	RO	RD	Tot					C	D	+/-		
*5	Buğra Bingöl	06:47	0/1	0,0	0/0	0,0	0/1	0,0	0/0	0,0	0	0	0	1	0	0	0	0	0	0	+6	0
6	Gökhan Külahi	17:55	3/4	75,0	1/1	100,0	2/3	66,7	0/0	0,0	0	1	1	0	1	2	0	2	1	+10	8	
*7	Barkın Akın	27:27	4/16	25,0	2/7	28,6	2/9	22,2	1/2	50,0	2	5	7	2	3	3	0	3	1	+21	11	
8	Suheyli Eğil	08:44	1/2	50,0	1/2	50,0	0/0	0,0	0/0	0,0	0	0	0	1	1	2	0	1	0	-4	2	
10	Mustafa Soyer	19:24	4/8	50,0	1/2	50,0	3/6	50,0	0/0	0,0	2	8	10	1	1	0	0	0	1	+14	11	
12	Alican Yeterel	DNP																				
*13	Çağtay Özcan	30:00	0/2	0,0	0/2	0,0	0/0	0,0	0/0	0,0	3	4	7	1	2	0	0	2	2	+17	0	
*22	Emre Alkaç	30:00	9/17	52,9	7/12	58,3	2/5	40,0	3/3	100,0	0	1	1	11	4	3	0	2	2	+17	23	
24	Yıldırım İkisivri	02:33	0/1	0,0	0/1	0,0	0/0	0,0	0/0	0,0	0	1	1	0	2	0	0	0	0	-4	0	
*34	Ersan Zerir	07:10	1/2	50,0	1/2	50,0	0/0	0,0	0/0	0,0	0	1	1	1	0	0	0	1	0	+8	2	
Team/Coach											1	4	5									
Totals			22/53	41,5	13/29	44,8	9/24	37,5	4/5	80,0	8	25	33	18	14	10	0	11	7		57	

ASSAN ALUMİNYUM (ASA)

Head coach: HASAN ÇAKIR

No.	Name	Min	FG		2P FG		3P FG		FT		Reb			AS	TO	ST	BS	PF			PTS
			M/A	%	M/A	%	M/A	%	M/A	%	RO	RD	Tot					C	D	+/-	
*5	Murat Akkaş	30:00	5/14	35,7	5/12	41,7	0/2	0,0	1/2	50,0	4	5	9	4	4	4	0	2	2	-17	11
*7	Efe Kıranatlı	16:09	0/1	0,0	0/1	0,0	0/0	0,0	0/0	0,0	2	2	4	0	1	0	0	0	0	-22	0
8	Helin Açıkgöz	DNP																			
9	Erdim Evsen	DNP																			
10	Semih Adakcı	19:20	2/10	20,0	1/5	20,0	1/5	20,0	0/0	0,0	3	8	11	0	1	5	1	2	2	-1	5
*13	Oray Sönmez	11:38	1/1	100,0	1/1	100,0	0/0	0,0	0/2	0,0	3	4	7	0	2	1	0	0	3	-19	2
24	Özkan Kırımı	10:44	2/6	33,3	2/5	40,0	0/1	0,0	0/0	0,0	1	2	3	0	2	0	0	1	0	+9	4
*34	Özgün Ünal	13:44	1/9	11,1	1/9	11,1	0/0	0,0	0/0	0,0	1	0	1	0	1	0	0	0	0	-20	2
61	Kemal Şahin	23:16	2/13	15,4	1/3	33,3	1/10	10,0	2/4	50,0	0	1	1	3	1	0	0	3	2	-7	7
75	Uğur Gül	03:30	0/2	0,0	0/2	0,0	0/0	0,0	0/0	0,0	0	1	1	0	0	0	0	0	0	-8	0
*91	Emrah Ehlidil	21:39	4/12	33,3	3/8	37,5	1/4	25,0	0/0	0,0	9	1	10	3	3	0	0	0	2	+0	9
Team/Coach											3	0	3								
Totals			17/68	25,0	14/46	30,4	3/22	13,6	3/8	37,5	26	24	50	10	15	10	1	8	11		40

Scoring by 5 minutes intervals

	Q1		Q2		Q3		Q4	
MTE	4	17	20	29	43	57		
ASA	6	11	21	27	30	40		

	MTE	ASA
Points from turnovers	17	14
Points in the paint	14	20
Second chance points	3	11
Fast break points	9	16
Bench points	21	16

	MTE	ASA
Biggest lead	18	2
Biggest scoring run	13-0 (17-6)	8-0 (17-14)
Lead changes	5	
Times tied	4	
Time Leading	24:21	02:24

Legend:

Min	Minutes played	M/A	Made/attempts	Reb	Rebounds	AS	Assists	TO	Turnovers
*	Starters	%	Shooting percentage	RD	Defensive rebounds	PF	Personal fouls	ST	Steals
DNP	Did not play	FT	Free throws	RO	Offensive rebounds	C	Committed fouls	BS	Blocked shots
FG	Field goals	PTS	Points scored	Tot	Total rebounds	D	Drawn fouls	+/-	Net points while on court

Game no. 11607/169
Istanbul
Kasımpaşa Spor Kompleksi

19.02.2017 12:00
(Local time)

OFFICIAL STATISTICS

76 - 50

(17-11, 12-16, 28-13, 19-10)

MITSUBISHI ELECTRIC (MTE)

Head coach: EMRE ALKAÇ

No.	Name	Min	FG		2P FG		3P FG		FT		Reb			AS	TO	ST	BS	PF			PTS	
			M/A	%	M/A	%	M/A	%	M/A	%	RO	RD	Tot					C	D	+/-		
*5	Buğra Bingöl	07:34	0/1	0,0	0/0	0,0	0/1	0,0	0/0	0,0	0	1	1	1	0	0	0	0	0	0	+6	0
6	Gökhan Külahi	22:58	3/5	60,0	1/2	50,0	2/3	66,7	0/0	0,0	0	3	3	0	1	2	0	2	1	+16	8	
*7	Barkın Akın	37:27	8/23	34,8	5/10	50,0	3/13	23,1	3/6	50,0	2	6	8	2	4	4	0	4	4	+30	22	
8	Suheyh Eğil	11:32	1/2	50,0	1/2	50,0	0/0	0,0	0/0	0,0	0	1	1	1	1	2	0	1	0	+2	2	
10	Mustafa Soyer	24:21	6/11	54,5	1/3	33,3	5/8	62,5	0/0	0,0	2	10	12	2	1	0	0	0	1	+17	17	
12	Alican Yeterel	DNP																				
*13	Çağtay Özcan	38:19	0/5	0,0	0/4	0,0	0/1	0,0	0/0	0,0	3	5	8	1	2	0	0	5	2	+22	0	
*22	Emre Alkaç	39:13	10/23	43,5	8/16	50,0	2/7	28,6	3/3	100,0	2	7	9	18	7	5	0	2	4	+26	25	
24	Yıldırım İkisivri	02:33	0/1	0,0	0/1	0,0	0/0	0,0	0/0	0,0	0	1	1	0	2	0	0	0	0	-4	0	
*34	Ersan Zerir	16:03	1/3	33,3	1/3	33,3	0/0	0,0	0/0	0,0	1	1	2	2	0	1	0	2	0	+15	2	
Team/Coach											1	5	6		0			0				
Totals			29/74	39,2	17/41	41,5	12/33	36,4	6/9	66,7	11	40	51	27	18	14	0	16	12		76	

ASSAN ALUMİNYUM (ASA)

Head coach: HASAN ÇAKIR

No.	Name	Min	FG		2P FG		3P FG		FT		Reb			AS	TO	ST	BS	PF			PTS
			M/A	%	M/A	%	M/A	%	M/A	%	RO	RD	Tot					C	D	+/-	
*5	Murat Akkaş	35:48	5/15	33,3	5/13	38,5	0/2	0,0	1/2	50,0	4	5	9	5	5	4	0	2	2	-15	11
*7	Efe Kıranatlı	18:57	0/1	0,0	0/1	0,0	0/0	0,0	0/0	0,0	2	2	4	0	1	0	0	0	0	-28	0
8	Helin Açıkgöz	02:48	0/2	0,0	0/2	0,0	0/0	0,0	0/0	0,0	0	0	0	0	1	0	0	0	0	-6	0
9	Erdim Evsen	DNP																			
10	Semih Adakcı	26:32	3/17	17,6	2/8	25,0	1/9	11,1	0/0	0,0	4	14	18	1	1	5	1	3	2	-4	7
*13	Oray Sönmez	14:26	1/1	100,0	1/1	100,0	0/0	0,0	0/6	0,0	4	5	9	0	3	1	0	0	5	-25	2
24	Özkan Kırımı	20:44	4/10	40,0	4/9	44,4	0/1	0,0	0/0	0,0	1	4	5	1	2	1	0	3	1	+0	8
*34	Özgün Ünal	18:20	1/10	10,0	1/10	10,0	0/0	0,0	0/0	0,0	2	0	2	1	1	0	0	0	0	-26	2
61	Kemal Şahin	28:40	2/14	14,3	1/4	25,0	1/10	10,0	3/6	50,0	0	1	1	3	3	0	0	3	3	-10	8
75	Uğur Gül	04:54	0/3	0,0	0/2	0,0	0/1	0,0	0/0	0,0	0	1	1	0	0	0	0	0	0	-13	0
*91	Emrah Ehlidil	28:51	5/16	31,3	3/9	33,3	2/7	28,6	0/0	0,0	10	3	13	4	3	0	0	2	3	-3	12
Team/Coach											3	0	3		0			0			
Totals			21/89	23,6	17/59	28,8	4/30	13,3	4/14	28,6	30	35	65	15	20	11	1	13	16		50

Scoring by 5 minutes intervals

	Q1		Q2		Q3		Q4	
MTE	4	17	20	29	43	57	68	76
ASA	6	11	21	27	30	40	48	50

	MTE	ASA
Points from turnovers	26	14
Points in the paint	22	22
Second chance points	6	11
Fast break points	18	19
Bench points	27	23

	MTE	ASA
Biggest lead	26	2
Biggest scoring run	13-0 (17-6)	8-0 (17-14)
Lead changes	5	
Times tied	4	
Time Leading	34:21	02:24

Legend:

Min	Minutes played	M/A	Made/attempts	Reb	Rebounds	AS	Assists	TO	Turnovers
*	Starters	%	Shooting percentage	RD	Defensive rebounds	PF	Personal fouls	ST	Steals
DNP	Did not play	FT	Free throws	RO	Offensive rebounds	C	Committed fouls	BS	Blocked shots
FG	Field goals	PTS	Points scored	Tot	Total rebounds	D	Drawn fouls	+/-	Net points while on court

Game no. 11607/169
Istanbul
Kasımpaşa Spor Kompleksi

19.02.2017 12:00
(Local time)

PLAY BY PLAY

76 - 50

(17-11, 12-16, 28-13, 19-10)

Starters

MITSUBISHI ELECTRIC: 5. B. Bingöl, 7. B. Akın, 13. Ç. Özcan, 22. E. Alkaç, 34. E. Zerin
ASSAN ALUMİNYUM: 5. M. Akkaş, 7. E. Kiranatlı, 13. O. Sönmez, 34. Ö. Ünal, 91. E. Ehlidil

Quarter 1

Game time	MITSUBISHI ELECTRIC	Score	ASSAN ALUMİNYUM
10:00	Substitution: 10. M. Soyer OUT, 34. E. Zerin IN		
09:55		0 - 2	91. E. Ehlidil 2 points shot made (Lay-Up, 2 PTS)
09:40	7. B. Akın 2 points shot made (Lay-Up, 2 PTS) 22. E. Alkaç Assist (1 AS)	2 - 2	
09:27			91. E. Ehlidil 2 points shot missed (Jump shot) 91. E. Ehlidil Offensive rebound (1 Reb)
09:23	7. B. Akın Steal (1 ST)		91. E. Ehlidil Turnover (Bad pass, 1 TO)
09:17	7. B. Akın 2 points shot missed (Lay-Up)		13. O. Sönmez Defensive rebound (1 Reb)
09:01			34. Ö. Ünal 2 points shot missed (Jump shot) 7. E. Kiranatlı Offensive rebound (1 Reb)
08:59			7. E. Kiranatlı 2 points shot missed (Jump shot) 13. O. Sönmez Offensive rebound (2 Reb)
08:56	7. B. Akın Steal (2 ST)		13. O. Sönmez Turnover (Bad pass, 1 TO)
08:40	5. B. Bingöl 3 points shot missed (Jump shot)		5. M. Akkaş Defensive rebound (1 Reb)
08:35			5. M. Akkaş 2 points shot missed (Jump shot) Team Offensive rebound (1 Reb)
08:17	34. E. Zerin Defensive rebound (1 Reb)		91. E. Ehlidil 3 points shot missed (Jump shot)
08:03	22. E. Alkaç 3 points shot missed (Jump shot)		7. E. Kiranatlı Defensive rebound (2 Reb)
07:48	7. B. Akın Steal (3 ST)		34. Ö. Ünal Turnover (Bad pass, 1 TO)
07:40	22. E. Alkaç 2 points shot made (Jump shot, fast break, points from turnover, 2 PTS) 13. Ç. Özcan Assist (1 AS)	4 - 2	
07:19			5. M. Akkaş 2 points shot missed (Jump shot) Team Offensive rebound (2 Reb)
07:11			34. Ö. Ünal 2 points shot missed (Jump shot) 91. E. Ehlidil Offensive rebound (2 Reb)
07:08			91. E. Ehlidil Turnover (Bad pass, 2 TO)
06:53	7. B. Akın 2 points shot missed (Lay-Up)		5. M. Akkaş Defensive rebound (2 Reb)
06:51	34. E. Zerin Personal foul (Player 1, Team 1) Foul drawn: 5. M. Akkaş		
06:51	Substitution: 5. B. Bingöl OUT, 10. M. Soyer IN		
06:51			Substitution: 91. E. Ehlidil OUT, 61. K. Şahin IN
06:40	10. M. Soyer Defensive rebound (1 Reb)		61. K. Şahin 3 points shot missed (Jump shot)
06:29	22. E. Alkaç Turnover (Bad pass, 1 TO)		5. M. Akkaş Steal (1 ST)
06:25		4 - 4	5. M. Akkaş 2 points shot made (Lay-Up, fast break, points from turnover, 2 PTS)
06:08	13. Ç. Özcan Turnover (Bad pass, 1 TO)		13. O. Sönmez Steal (1 ST)
06:04	10. M. Soyer Defensive rebound (2 Reb)		34. Ö. Ünal 2 points shot missed (Jump shot)
05:51	34. E. Zerin 2 points shot missed (Jump shot)		13. O. Sönmez Defensive rebound (3 Reb)
05:51	7. B. Akın Personal foul (Player 1, Team 2) Foul drawn: 13. O. Sönmez		
05:37		4 - 6	13. O. Sönmez 2 points shot made (Lay-Up, 2 PTS) 61. K. Şahin Assist (1 AS)
05:16	10. M. Soyer 3 points shot missed (Jump shot)		13. O. Sönmez Defensive rebound (4 Reb)
04:52			34. Ö. Ünal 2 points shot missed (Jump shot) 7. E. Kiranatlı Offensive rebound (3 Reb)
04:50			7. E. Kiranatlı Turnover (Travelling, 1 TO)
04:35	34. E. Zerin 2 points shot made (Jump shot, points from turnover, 2 PTS) 22. E. Alkaç Assist (2 AS)	6 - 6	

Quarter 1

Game time	MITSUBISHI ELECTRIC	Score	ASSAN ALUMİNYUM
04:20	10. M. Soyer Defensive rebound (3 Reb)		61. K. Şahin 3 points shot missed (Jump shot)
04:13	22. E. Alkaç 3 points shot made (Jump shot, fast break, 5 PTS) 10. M. Soyer Assist (1 AS)	9 - 6	
03:55	10. M. Soyer Defensive rebound (4 Reb)		61. K. Şahin 2 points shot missed (Lay-Up)
03:44	7. B. Akın 2 points shot made (Lay-Up, 4 PTS) 22. E. Alkaç Assist (3 AS)	11 - 6	
03:32	22. E. Alkaç Defensive rebound (1 Reb)		61. K. Şahin 3 points shot missed (Jump shot)
03:21	10. M. Soyer 3 points shot made (Jump shot, 3 PTS) 34. E. Zerin Assist (1 AS)	14 - 6	
02:57			5. M. Akkaş 2 points shot missed (Jump shot) 13. O. Sönmez Offensive rebound (5 Reb)
02:52	Team Defensive rebound (1 Reb)		34. Ö. Ünal 2 points shot missed (Jump shot)
02:50			Substitution: 7. E. Kıranatlı OUT, 10. S. Adakçı IN
02:50	Substitution: 34. E. Zerin OUT, 6. G. Kùlahi IN		
02:38	10. M. Soyer 3 points shot made (Jump shot, 6 PTS) 22. E. Alkaç Assist (4 AS)	17 - 6	
02:22			10. S. Adakçı 2 points shot missed (Driving Lay-Up) 34. Ö. Ünal Offensive rebound (1 Reb)
02:18	7. B. Akın Defensive rebound (1 Reb)		34. Ö. Ünal 2 points shot missed (Jump shot)
02:05	7. B. Akın 3 points shot missed (Jump shot)		10. S. Adakçı Defensive rebound (1 Reb)
02:00	7. B. Akın Personal shooting foul (Player 2, Team 3) Foul drawn: 61. K. Şahin, 2 free throws awarded		
02:00			Substitution: 13. O. Sönmez OUT, 24. Ö. Kırımı IN
02:00			Substitution: 34. Ö. Ünal OUT, 91. E. Ehlidil IN
02:00			61. K. Şahin Free throw missed (Throw 1/2, fast break)
02:00		17 - 7	61. K. Şahin Free throw made (Throw 2/2, fast break, 1 PTS)
01:41	22. E. Alkaç Turnover (Bad pass, 2 TO)		10. S. Adakçı Steal (1 ST)
01:26	22. E. Alkaç Steal (1 ST)		5. M. Akkaş Turnover (Bad pass, 1 TO)
01:17	6. G. Kùlahi 3 points shot missed (Jump shot) 10. M. Soyer Offensive rebound (5 Reb)		
01:11	13. Ç. Özcan Turnover (Bad pass, 2 TO)		5. M. Akkaş Steal (2 ST)
01:04			61. K. Şahin 2 points shot missed (Jump shot) 91. E. Ehlidil Offensive rebound (3 Reb)
01:00		17 - 9	91. E. Ehlidil 2 points shot made (Tip-In, second chance points, points from turnover, 4 PTS)
00:43	10. M. Soyer Turnover (Ball handling, 1 TO)		10. S. Adakçı Steal (2 ST)
00:33		17 - 11	24. Ö. Kırımı 2 points shot made (Jump shot, points from turnover, 2 PTS) 5. M. Akkaş Assist (1 AS)
00:04	7. B. Akın 3 points shot missed (Jump shot)		24. Ö. Kırımı Defensive rebound (1 Reb)
00:00			24. Ö. Kırımı 3 points shot missed (Jump shot)

Quarter 2

Game time	MITSUBISHI ELECTRIC	Score	ASSAN ALUMİNYUM
10:00	Substitution: 10. M. Soyer OUT, 8. S. Eğıl IN		
10:00			Substitution: 61. K. Şahin OUT, 34. Ö. Ünal IN
09:55			Substitution: 34. Ö. Ünal OUT, 61. K. Şahin IN
09:53	22. E. Alkaç 2 points shot missed (Lay-Up)		10. S. Adakçı Defensive rebound (2 Reb)
09:43			10. S. Adakçı 2 points shot missed (Lay-Up) 10. S. Adakçı Offensive rebound (3 Reb)
09:33			10. S. Adakçı 3 points shot missed (Jump shot) 5. M. Akkaş Offensive rebound (3 Reb)
09:31		17 - 13	5. M. Akkaş 2 points shot made (Jump shot, second chance points, 4 PTS)
09:10	7. B. Akın Turnover (Bad pass, 1 TO)		10. S. Adakçı Steal (3 ST)
09:06	6. G. Kùlahi Steal (1 ST)		61. K. Şahin Turnover (Bad pass, 1 TO)
08:59			61. K. Şahin Personal foul (Player 1, Team 1) Foul drawn: 22. E. Alkaç
08:51	22. E. Alkaç Turnover (Bad pass, 3 TO)		10. S. Adakçı Steal (4 ST)
08:47	6. G. Kùlahi Personal shooting foul (Player 1, Team 1) Foul drawn: 61. K. Şahin, 2 free throws awarded		
08:47		17 - 14	61. K. Şahin Free throw made (Throw 1/2, fast break, points from turnover, 2 PTS)
08:47			5. M. Akkaş Assist (2 AS)
08:47	13. Ç. Özcan Defensive rebound (1 Reb)		61. K. Şahin Free throw missed (Throw 2/2, fast break, points from turnover)

Quarter 2

Game time	MITSUBISHI ELECTRIC	Score	ASSAN ALUMİNYUM
08:25	8. S. Eğil 2 points shot missed (Jump shot) Team Offensive rebound (2 Reb)		
08:20	8. S. Eğil Turnover (Bad pass, 1 TO)		10. S. Adakcı Steal (5 ST)
08:06	Team Defensive rebound (3 Reb)		91. E. Ehlidil 2 points shot missed (Lay-Up)
07:50	7. B. Akın 3 points shot missed (Jump shot) 13. Ç. Özcan Offensive rebound (2 Reb)		
07:49	13. Ç. Özcan 2 points shot missed (Tip-In)		10. S. Adakcı Defensive rebound (4 Reb)
07:31	22. E. Alkaç Steal (2 ST)		24. Ö. Kırımı Turnover (Ball handling, 1 TO)
07:31	Substitution: 7. B. Akın OUT, 24. Y. İkisivri IN		
07:24			5. M. Akkaş Personal shooting foul (Player 1, Team 2) Foul drawn: 22. E. Alkaç, 2 free throws awarded
07:24	22. E. Alkaç Free throw made (Throw 1/2, points from turnover, 6 PTS)	18 - 14	
07:24	22. E. Alkaç Free throw made (Throw 2/2, points from turnover, 7 PTS)	19 - 14	
07:18		19 - 17	10. S. Adakcı 3 points shot made (Jump shot, fast break, 3 PTS) 91. E. Ehlidil Assist (1 AS)
06:58	13. Ç. Özcan 2 points shot missed (Jump shot)		10. S. Adakcı Defensive rebound (5 Reb)
06:50	8. S. Eğil Steal (1 ST)		91. E. Ehlidil Turnover (Bad pass, 3 TO)
06:41	24. Y. İkisivri 2 points shot missed (Lay-Up)		91. E. Ehlidil Defensive rebound (4 Reb)
06:39			61. K. Şahin Technical foul (Player 2, Team 3) 1 free throws awarded
06:39	22. E. Alkaç Free throw made (Throw 1/1, 8 PTS)	20 - 17	
06:33	22. E. Alkaç 2 points shot missed (Lay-Up)		5. M. Akkaş Defensive rebound (4 Reb)
06:12			91. E. Ehlidil 3 points shot missed (Jump shot) 5. M. Akkaş Offensive rebound (5 Reb)
06:11	8. S. Eğil Personal foul (Player 1, Team 2) Foul drawn: 91. E. Ehlidil		
06:11	Timeout		
06:11	Substitution: 6. G. Kùlahi OUT, 10. M. Soyer IN		
06:07			61. K. Şahin 3 points shot missed (Jump shot) 91. E. Ehlidil Offensive rebound (5 Reb)
06:05			91. E. Ehlidil 2 points shot missed (Jump shot) 24. Ö. Kırımı Offensive rebound (2 Reb)
06:03		20 - 19	24. Ö. Kırımı 2 points shot made (Jump shot, second chance points, 4 PTS)
05:47	24. Y. İkisivri Turnover (Ball handling, 1 TO)		5. M. Akkaş Steal (3 ST)
05:44		20 - 21	91. E. Ehlidil 2 points shot made (Lay-Up, fast break, points from turnover, 6 PTS) 5. M. Akkaş Assist (3 AS)
05:25	10. M. Soyer 2 points shot missed (Jump shot)		24. Ö. Kırımı Defensive rebound (3 Reb)
05:05	24. Y. İkisivri Defensive rebound (1 Reb)		5. M. Akkaş 2 points shot missed (Jump shot)
04:58	24. Y. İkisivri Turnover (Bad pass, 2 TO)		
04:58	Substitution: 24. Y. İkisivri OUT, 7. B. Akın IN		
04:51	Team Defensive rebound (4 Reb)		61. K. Şahin 3 points shot missed (Jump shot)
04:37	22. E. Alkaç 3 points shot made (Jump shot, 11 PTS)	23 - 21	
04:20	7. B. Akın Defensive rebound (2 Reb)		61. K. Şahin 3 points shot missed (Jump shot)
04:17	7. B. Akın Turnover (Ball handling, 2 TO)		5. M. Akkaş Steal (4 ST)
04:15			5. M. Akkaş 2 points shot missed (Lay-Up) 91. E. Ehlidil Offensive rebound (6 Reb)
04:06			24. Ö. Kırımı 2 points shot missed (Jump shot) 10. S. Adakcı Offensive rebound (6 Reb)
04:03			10. S. Adakcı Turnover (Travelling, 1 TO)
03:49	8. S. Eğil 2 points shot made (Jump shot, points from turnover, 2 PTS) 7. B. Akın Assist (1 AS)	25 - 21	
03:29			10. S. Adakcı 3 points shot missed (Jump shot) 91. E. Ehlidil Offensive rebound (7 Reb)
03:18			61. K. Şahin 3 points shot missed (Jump shot) 10. S. Adakcı Offensive rebound (7 Reb)
03:08			24. Ö. Kırımı 2 points shot missed (Jump shot) 5. M. Akkaş Offensive rebound (6 Reb)
02:59	8. S. Eğil Steal (2 ST)		5. M. Akkaş Turnover (Ball handling, 2 TO)
02:56	22. E. Alkaç 2 points shot made (Lay-Up, fast break, points from turnover, 13 PTS) 8. S. Eğil Assist (1 AS)	27 - 21	
02:35		27 - 23	5. M. Akkaş 2 points shot made (Jump shot, 6 PTS)
02:18	22. E. Alkaç 3 points shot missed (Jump shot)		5. M. Akkaş Defensive rebound (7 Reb)

Quarter 2

Game time	MITSUBISHI ELECTRIC	Score	ASSAN ALUMİNYUM
02:12		27 - 25	5. M. Akkaş 2 points shot made (Jump shot, fast break, 8 PTS)
01:55	7. B. Akın 3 points shot missed (Jump shot)		10. S. Adakçı Defensive rebound (8 Reb)
01:42	13. Ç. Özcan Defensive rebound (3 Reb)		24. Ö. Kırımı 2 points shot missed (Jump shot)
01:33	10. M. Soyer 3 points shot missed (Jump shot)		5. M. Akkaş Defensive rebound (8 Reb)
01:22	7. B. Akın Defensive rebound (3 Reb)		10. S. Adakçı 2 points shot missed (Jump shot)
01:16			10. S. Adakçı Personal foul (Player 1, Team 4)
01:16			Foul drawn: 13. Ç. Özcan
01:16			Timeout
01:16	Substitution: 8. S. Eğil OUT, 6. G. Kūlahi IN		
01:16			Substitution: 10. S. Adakçı OUT, 7. E. Kıranatlı IN
01:16			Substitution: 24. Ö. Kırımı OUT, 13. O. Sönmez IN
01:16			Substitution: 61. K. Şahin OUT, 34. Ö. Ünal IN
01:16			Substitution: 91. E. Ehlidil OUT, 75. . Gül IN
00:58	22. E. Alkaç 2 points shot made (Lay-Up, 15 PTS)	29 - 25	
00:43	13. Ç. Özcan Personal foul (Player 1, Team 3) Foul drawn: 13. O. Sönmez		
00:33		29 - 27	34. Ö. Ünal 2 points shot made (Jump shot, 2 PTS) 5. M. Akkaş Assist (4 AS)
00:10	22. E. Alkaç 2 points shot missed (Lay-Up)		13. O. Sönmez Defensive rebound (6 Reb)
00:00	7. B. Akın Defensive rebound (4 Reb)		5. M. Akkaş 2 points shot missed (Jump shot)

Quarter 3

Game time	MITSUBISHI ELECTRIC	Score	ASSAN ALUMİNYUM
09:49	13. Ç. Özcan Defensive rebound (4 Reb)		34. Ö. Ünal 2 points shot missed (Jump shot)
09:35	10. M. Soyer 3 points shot made (Jump shot, 9 PTS) 22. E. Alkaç Assist (5 AS)	32 - 27	
09:22	10. M. Soyer Defensive rebound (6 Reb)		75. . Gül 2 points shot missed (Jump shot)
09:17	22. E. Alkaç 2 points shot missed (Lay-Up)		75. . Gül Defensive rebound (1 Reb)
08:55	10. M. Soyer Defensive rebound (7 Reb)		75. . Gül 2 points shot missed (Jump shot)
08:44	6. G. Kūlahi 3 points shot made (Jump shot, 3 PTS) 22. E. Alkaç Assist (6 AS)	35 - 27	
08:23	10. M. Soyer Defensive rebound (8 Reb)		34. Ö. Ünal 2 points shot missed (Jump shot)
08:12	22. E. Alkaç 2 points shot made (Jump shot, 17 PTS)	37 - 27	
07:46	22. E. Alkaç Personal shooting foul (Player 1, Team 1) Foul drawn: 13. O. Sönmez, 2 free throws awarded		
07:46			Substitution: 7. E. Kıranatlı OUT, 10. S. Adakçı IN
07:46			Substitution: 34. Ö. Ünal OUT, 61. K. Şahin IN
07:46			Substitution: 75. . Gül OUT, 91. E. Ehlidil IN
07:46			13. O. Sönmez Free throw missed (Throw 1/2)
07:46			13. O. Sönmez Free throw missed (Throw 2/2)
07:41			13. O. Sönmez Offensive rebound (7 Reb)
07:38			13. O. Sönmez Turnover (Travelling, 2 TO)
07:34	6. G. Kūlahi 2 points shot made (Jump shot, points from turnover, 5 PTS) 22. E. Alkaç Assist (7 AS)	39 - 27	
07:21			10. S. Adakçı 2 points shot missed (Driving Lay-Up) 91. E. Ehlidil Offensive rebound (8 Reb)
07:15	7. B. Akın Defensive rebound (5 Reb)		91. E. Ehlidil 2 points shot missed (Jump shot)
07:10	22. E. Alkaç 2 points shot made (Lay-Up, fast break, 19 PTS) 7. B. Akın Assist (2 AS)	41 - 27	
07:00			5. M. Akkaş Turnover (Bad pass, 3 TO)
06:46	10. M. Soyer 3 points shot missed (Jump shot)		10. S. Adakçı Defensive rebound (9 Reb)
06:32	6. G. Kūlahi Defensive rebound (1 Reb)		10. S. Adakçı 3 points shot missed (Jump shot)
06:16	7. B. Akın Personal offensive foul (Player 3, Team 2) Foul drawn: 10. S. Adakçı 7. B. Akın Turnover (Offensive foul, 3 TO)		
06:09		41 - 30	61. K. Şahin 3 points shot made (Jump shot, fast break, points from turnover, 5 PTS) 91. E. Ehlidil Assist (2 AS)
05:51	7. B. Akın 3 points shot missed (Jump shot)		10. S. Adakçı Defensive rebound (10 Reb)
05:29			Substitution: 34. Ö. Ünal OUT, 24. Ö. Kırımı IN
05:29	6. G. Kūlahi Steal (2 ST)		24. Ö. Kırımı Turnover (Ball handling, 2 TO)
05:29			24. Ö. Kırımı Personal foul (Player 1, Team 1) Foul drawn: 6. G. Kūlahi

Quarter 3

Game time	MITSUBISHI ELECTRIC	Score	ASSAN ALUMİNYUM
05:29			Timeout
05:29			Substitution: 24. Ö. Kırımı OUT, 7. E. Kiranatlı IN
05:21	10. M. Soyer 2 points shot made (Jump shot, points from turnover, 11 PTS) 22. E. Alkaç Assist (8 AS)	43 - 30	
05:05			91. E. Ehlidil 2 points shot missed (Lay-Up) 91. E. Ehlidil Offensive rebound (9 Reb)
04:58			61. K. Şahin 3 points shot missed (Jump shot) 91. E. Ehlidil Offensive rebound (10 Reb)
04:57	13. Ç. Özcan Personal foul (Player 2, Team 3) Foul drawn: 91. E. Ehlidil		
04:49	10. M. Soyer Defensive rebound (9 Reb)		5. M. Akkaş 2 points shot missed (Jump shot)
04:40	6. G. Külahi 3 points shot made (Jump shot, 8 PTS) 22. E. Alkaç Assist (9 AS)	46 - 30	
04:21			91. E. Ehlidil 3 points shot missed (Jump shot) Team Offensive rebound (3 Reb)
04:13		46 - 33	91. E. Ehlidil 3 points shot made (Jump shot, second chance points, 9 PTS) 61. K. Şahin Assist (2 AS)
03:58	7. B. Akın 2 points shot missed (Jump shot)		61. K. Şahin Defensive rebound (1 Reb)
03:48			10. S. Adakcı Block (1 BS)
03:42	7. B. Akın 3 points shot missed (Jump shot) 10. M. Soyer Offensive rebound (10 Reb)		
03:38			61. K. Şahin Personal foul (Player 3, Team 2) Foul drawn: 10. M. Soyer
03:38	Substitution: 10. M. Soyer OUT, 5. B. Bingöl IN		
03:29	7. B. Akın 2 points shot missed (Driving Lay-Up) 7. B. Akın Offensive rebound (6 Reb)		
03:29			10. S. Adakcı Personal shooting foul (Player 2, Team 3) Foul drawn: 7. B. Akın, 2 free throws awarded
03:29	7. B. Akın Free throw made (Throw 1/2, second chance points, 5 PTS)	47 - 33	
03:29	7. B. Akın Free throw missed (Throw 2/2, second chance points) 13. Ç. Özcan Offensive rebound (5 Reb)		
03:24	22. E. Alkaç 3 points shot missed (Jump shot) 7. B. Akın Offensive rebound (7 Reb)		
03:18	7. B. Akın 2 points shot missed (Jump shot)		10. S. Adakcı Defensive rebound (11 Reb)
03:03	22. E. Alkaç Steal (3 ST)		5. M. Akkaş Turnover (Ball handling, 4 TO)
02:51	7. B. Akın 3 points shot made (Jump shot, points from turnover, 8 PTS) 22. E. Alkaç Assist (10 AS)	50 - 33	
02:38		50 - 35	10. S. Adakcı 2 points shot made (Jump shot, 5 PTS) 61. K. Şahin Assist (3 AS)
02:27	22. E. Alkaç 2 points shot made (Lay-Up, 21 PTS)	52 - 35	
02:12	13. Ç. Özcan Defensive rebound (6 Reb)		10. S. Adakcı 3 points shot missed (Jump shot)
02:01	6. G. Külahi Turnover (Ball handling, 1 TO)		
01:43			61. K. Şahin 3 points shot missed (Jump shot) 5. M. Akkaş Offensive rebound (9 Reb)
01:31		52 - 37	5. M. Akkaş 2 points shot made (Jump shot, second chance points, points from turnover, 10 PTS)
01:31	22. E. Alkaç Personal offensive foul (Player 2, Team 4) Foul drawn: 10. S. Adakcı 22. E. Alkaç Turnover (Offensive foul, 4 TO)		
01:16	Team Defensive rebound (5 Reb)		5. M. Akkaş 3 points shot missed (Jump shot)
01:03	7. B. Akın 3 points shot made (Jump shot, 11 PTS) 22. E. Alkaç Assist (11 AS)	55 - 37	
00:51	6. G. Külahi Personal shooting foul (Player 2, Team 5) Foul drawn: 5. M. Akkaş, 2 free throws awarded		
00:51			5. M. Akkaş Free throw missed (Throw 1/2)
00:51		55 - 38	5. M. Akkaş Free throw made (Throw 2/2, 11 PTS)
00:35	22. E. Alkaç 2 points shot missed (Lay-Up)		7. E. Kiranatlı Defensive rebound (4 Reb)
00:28		55 - 40	61. K. Şahin 2 points shot made (Lay-Up, fast break, 7 PTS) 91. E. Ehlidil Assist (3 AS)
00:13	7. B. Akın 3 points shot missed (Jump shot) 13. Ç. Özcan Offensive rebound (7 Reb)		
00:09			5. M. Akkaş Personal foul (Player 2, Team 4) Foul drawn: 13. Ç. Özcan
00:06	22. E. Alkaç 2 points shot made (Jump shot, second chance points, 23 PTS) 5. B. Bingöl Assist (1 AS)	57 - 40	

Quarter 3

Game time	MITSUBISHI ELECTRIC	Score	ASSAN ALUMİNYUM
00:01			5. M. Akkaş 3 points shot missed (Jump shot)

Quarter 4

Game time	MITSUBISHI ELECTRIC	Score	ASSAN ALUMİNYUM
10:00	Substitution: 5. B. Bingöl OUT, 10. M. Soyer IN		
10:00	Substitution: 6. G. Külahi OUT, 34. E. Zerin IN		
10:00			Substitution: 7. E. Kıranatlı OUT, 24. Ö. Kırımı IN
09:48	10. M. Soyer 2 points shot missed (Jump shot) 22. E. Alkaç Offensive rebound (2 Reb)		
09:43	22. E. Alkaç 2 points shot missed (Jump shot)		10. S. Adakçı Defensive rebound (12 Reb)
09:35	22. E. Alkaç Steal (4 ST)		5. M. Akkaş Turnover (Ball handling, 5 TO)
09:30	7. B. Akın 2 points shot made (Lay-Up, fast break, points from turnover, 13 PTS) 22. E. Alkaç Assist (12 AS)	59 - 40	
09:23		59 - 43	91. E. Ehlidil 3 points shot made (Jump shot, fast break, 12 PTS) 10. S. Adakçı Assist (1 AS)
09:10	22. E. Alkaç 3 points shot missed (Jump shot)		10. S. Adakçı Defensive rebound (13 Reb)
08:57	13. Ç. Özcan Personal shooting foul (Player 3, Team 1) Foul drawn: 61. K. Şahin, 2 free throws awarded		
08:57			61. K. Şahin Free throw missed (Throw 1/2)
08:57		59 - 44	61. K. Şahin Free throw made (Throw 2/2, 8 PTS)
08:57			5. M. Akkaş Assist (5 AS)
08:46			24. Ö. Kırımı Personal foul (Player 2, Team 1) Foul drawn: 7. B. Akın
08:38	22. E. Alkaç Turnover (Bad pass, 5 TO)		
08:25			91. E. Ehlidil 3 points shot missed (Jump shot) 10. S. Adakçı Offensive rebound (14 Reb)
08:19	22. E. Alkaç Defensive rebound (3 Reb)		10. S. Adakçı 2 points shot missed (Lay-Up)
08:15			91. E. Ehlidil Personal shooting foul (Player 1, Team 2) Foul drawn: 7. B. Akın, 2 free throws awarded
08:15	7. B. Akın Free throw made (Throw 1/2, fast break, 14 PTS)	60 - 44	
08:15	22. E. Alkaç Assist (13 AS)		
08:15	7. B. Akın Free throw missed (Throw 2/2, fast break)		10. S. Adakçı Defensive rebound (15 Reb)
08:04		60 - 46	10. S. Adakçı 2 points shot made (Lay-Up, 7 PTS) 24. Ö. Kırımı Assist (1 AS)
07:52			10. S. Adakçı Personal foul (Player 3, Team 3) Foul drawn: 22. E. Alkaç
07:42	13. Ç. Özcan 2 points shot missed (Jump shot)		91. E. Ehlidil Defensive rebound (11 Reb)
07:36	13. Ç. Özcan Personal foul (Player 4, Team 2) Foul drawn: 24. Ö. Kırımı		
07:27	10. M. Soyer Defensive rebound (11 Reb)		61. K. Şahin 2 points shot missed (Jump shot)
07:20	22. E. Alkaç Turnover (Ball handling, 6 TO)		24. Ö. Kırımı Steal (1 ST)
07:14			10. S. Adakçı 3 points shot missed (Jump shot)
07:08	22. E. Alkaç Defensive rebound (4 Reb)		
07:03	22. E. Alkaç 2 points shot missed (Jump shot) 22. E. Alkaç Offensive rebound (5 Reb)		
06:56	10. M. Soyer 3 points shot made (Jump shot, second chance points, 14 PTS) 22. E. Alkaç Assist (14 AS)	63 - 46	
06:38			24. Ö. Kırımı 2 points shot missed (Jump shot)
06:30		63 - 48	24. Ö. Kırımı 2 points shot made (Jump shot, 6 PTS) 91. E. Ehlidil Assist (4 AS)
06:27	7. B. Akın Turnover (Ball handling, 4 TO)		
06:27			Substitution: 5. M. Akkaş OUT, 75. . Gül IN
06:21	13. Ç. Özcan Defensive rebound (8 Reb)		91. E. Ehlidil 3 points shot missed (Jump shot)
06:09	7. B. Akın 3 points shot missed (Jump shot) 34. E. Zerin Offensive rebound (2 Reb)		
06:00	22. E. Alkaç 2 points shot missed (Jump shot)		10. S. Adakçı Defensive rebound (16 Reb)
05:51			61. K. Şahin Turnover (Travelling, 2 TO)
05:39	10. M. Soyer 3 points shot made (Jump shot, points from turnover, 17 PTS) 22. E. Alkaç Assist (15 AS)	66 - 48	
05:28	10. M. Soyer Defensive rebound (12 Reb)		10. S. Adakçı 3 points shot missed (Jump shot)
05:22	22. E. Alkaç 2 points shot made (Jump shot, fast break, 25 PTS) 10. M. Soyer Assist (2 AS)	68 - 48	

Quarter 4

Game time	MITSUBISHI ELECTRIC	Score	ASSAN ALUMİNYUM
05:06	Team Defensive rebound (6 Reb)		75. . Gül 3 points shot missed (Jump shot)
05:03	Substitution: 10. M. Soyer OUT, 6. G. Külahi IN		
05:03			Substitution: 75. . Gül OUT, 5. M. Akkaş IN
04:46	34. E. Zerin 2 points shot missed (Jump shot)		10. S. Adakçı Defensive rebound (17 Reb)
04:42	7. B. Akın Steal (4 ST)		61. K. Şahin Turnover (Bad pass, 3 TO)
04:42			24. Ö. Kırımı Personal foul (Player 3, Team 4) Foul drawn: 22. E. Alkaç
04:36			Substitution: 61. K. Şahin OUT, 34. Ö. Ünal IN
04:29	22. E. Alkaç 3 points shot missed (Jump shot)		24. Ö. Kırımı Defensive rebound (4 Reb)
04:16	22. E. Alkaç Defensive rebound (6 Reb)		24. Ö. Kırımı 2 points shot missed (Jump shot)
04:00	13. Ç. Özcan 3 points shot missed (Jump shot)		10. S. Adakçı Defensive rebound (18 Reb)
03:53	6. G. Külahi Defensive rebound (2 Reb)		91. E. Ehlidil 2 points shot missed (Jump shot)
03:40	22. E. Alkaç Turnover (Bad pass, 7 TO)		
03:32	22. E. Alkaç Defensive rebound (7 Reb)		5. M. Akkaş 2 points shot missed (Jump shot)
03:16	7. B. Akın 3 points shot missed (Jump shot)		91. E. Ehlidil Defensive rebound (12 Reb)
03:12	7. B. Akın Personal foul (Player 4, Team 3) Foul drawn: 91. E. Ehlidil		
03:07			10. S. Adakçı 3 points shot missed (Jump shot) 34. Ö. Ünal Offensive rebound (2 Reb)
03:00			10. S. Adakçı 3 points shot missed (Jump shot) 91. E. Ehlidil Offensive rebound (13 Reb)
02:52	22. E. Alkaç Defensive rebound (8 Reb)		10. S. Adakçı 2 points shot missed (Lay-Up)
02:48			91. E. Ehlidil Personal shooting foul (Player 2, Team 5) Foul drawn: 7. B. Akın, 2 free throws awarded
02:48	Substitution: 34. E. Zerin OUT, 8. S. Eğil IN		
02:48			Substitution: 5. M. Akkaş OUT, 7. E. Kıranatlı IN
02:48			Substitution: 10. S. Adakçı OUT, 8. H. Açıkgöz IN
02:48			Substitution: 91. E. Ehlidil OUT, 13. O. Sönmez IN
02:48	7. B. Akın Free throw missed (Throw 1/2)		
02:48	7. B. Akın Free throw made (Throw 2/2, 15 PTS)	69 - 48	
02:48	22. E. Alkaç Assist (16 AS)		
02:37	6. G. Külahi Defensive rebound (3 Reb)		8. H. Açıkgöz 2 points shot missed (Jump shot)
02:26	7. B. Akın 3 points shot made (Jump shot, 18 PTS) 22. E. Alkaç Assist (17 AS)	72 - 48	
02:07		72 - 50	24. Ö. Kırımı 2 points shot made (Jump shot, 8 PTS) 34. Ö. Ünal Assist (1 AS)
01:57	13. Ç. Özcan 2 points shot missed (Jump shot)		13. O. Sönmez Defensive rebound (8 Reb)
01:43			8. H. Açıkgöz 2 points shot missed (Jump shot) 13. O. Sönmez Offensive rebound (9 Reb)
01:41	13. Ç. Özcan Personal shooting foul (Player 5, Team 4) Foul drawn: 13. O. Sönmez, 2 free throws awarded Substitution: 13. Ç. Özcan OUT, 34. E. Zerin IN		
01:41			13. O. Sönmez Free throw missed (Throw 1/2, second chance points)
01:41	22. E. Alkaç Defensive rebound (9 Reb)		13. O. Sönmez Free throw missed (Throw 2/2, second chance points)
01:19	34. E. Zerin Steal (1 ST)		13. O. Sönmez Turnover (Ball handling, 3 TO)
01:15	7. B. Akın 2 points shot made (Lay-Up, fast break, points from turnover, 20 PTS)	74 - 50	
01:09	34. E. Zerin Assist (2 AS)		
01:01	22. E. Alkaç Steal (5 ST)		8. H. Açıkgöz Turnover (Ball handling, 1 TO)
00:56	7. B. Akın 2 points shot made (Lay-Up, fast break, points from turnover, 22 PTS)	76 - 50	
00:52	22. E. Alkaç Assist (18 AS)		
00:47	34. E. Zerin Personal shooting foul (Player 2, Team 5) Foul drawn: 13. O. Sönmez, 2 free throws awarded Substitution: 22. E. Alkaç OUT, 5. B. Bingöl IN		
00:47			13. O. Sönmez Free throw missed (Throw 1/2)
00:47	8. S. Eğil Defensive rebound (1 Reb)		13. O. Sönmez Free throw missed (Throw 2/2)
00:24	7. B. Akın 3 points shot missed (Jump shot)		24. Ö. Kırımı Defensive rebound (5 Reb)
00:11	7. B. Akın Defensive rebound (8 Reb)		34. Ö. Ünal 2 points shot missed (Jump shot)
00:01	6. G. Külahi 2 points shot missed (Jump shot)		
00:00	5. B. Bingöl Defensive rebound (1 Reb)		

Game no. 11607/169
 İstanbul
 Kasımpaşa Spor Kompleksi

19.02.2017 12:00
 (Local time)

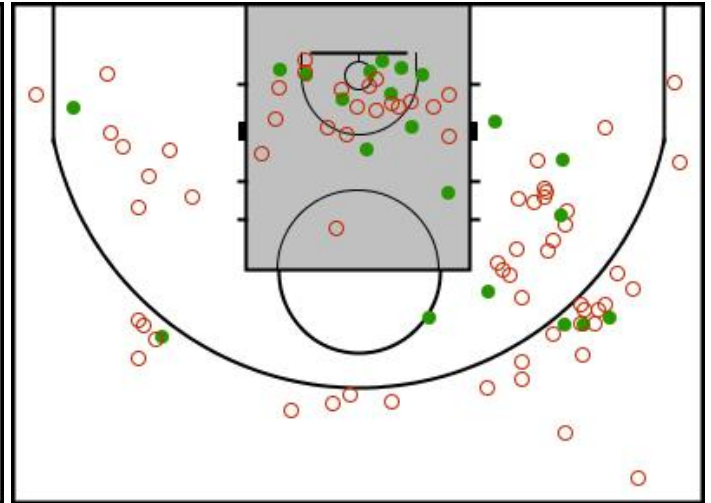
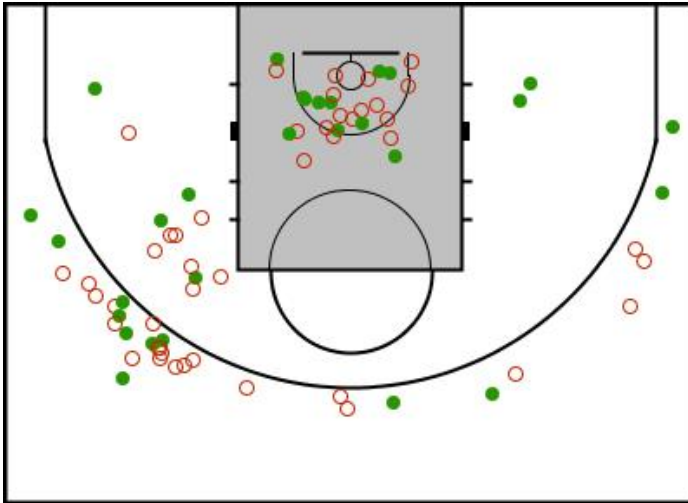
Shot chart

76 - 50

(17-11, 12-16, 28-13, 19-10)

MITSUBISHI ELECTRIC

ASSAN ALUMİNYUM



MITSUBISHI ELECTRIC

ASSAN ALUMİNYUM

