

DHL EXPRESS 11 – 24 EKOL LOJISTIK
(11-24)

Q1

Scoring by 5 Minute intervals

DHL	0	11
EKO	11	24

Coach: Neset Seckin Piker

Assistant Coach(es):

DHL EXPRESS (DHL)

No	Name	Min	Field Goals		2 Points		3 Points		Free Throws		Rebounds			AS	TO	ST	BS	Fouls		+/-	PTS	
			M/A	%	M/A	%	M/A	%	M/A	%	OR	DR	TOT					PF	FD			
1	Cagdas Olcay Altunkaya	05:26	0/1	0,0	0/0	0,0	0/1	0,0	0/0	0,0	1	1	2	1	0	0	0	0	0	0	-5	0
2	Onur Sari	DNP																				
5	Anil Altintoprak	02:21	0/0	0,0	0/0	0,0	0/0	0,0	0/0	0,0	0	0	0	0	0	0	0	0	0	0	-7	0
*6	Baris Candan	08:13	0/6	0,0	0/1	0,0	0/5	0,0	0/0	0,0	0	1	1	0	0	0	0	0	0	0	-13	0
*7	A Serdar Dilmen (C)	10:00	0/0	0,0	0/0	0,0	0/0	0,0	0/0	0,0	0	3	3	0	0	0	0	1	0	0	-13	0
*8	Kaan Sahinkaya	07:39	2/2	100,0	1/1	100,0	1/1	100,0	0/0	0,0	1	0	1	1	2	1	0	3	0	0	-6	5
9	Cihan Dogan	DNP																				
10	Mustafa Giray Cavdar	DNP																				
11	Kemal Can Diz	DNP																				
*24	Kaan Ustundag	06:21	0/0	0,0	0/0	0,0	0/0	0,0	0/0	0,0	1	2	3	0	0	0	0	1	0	0	-8	0
55	Muhammed Coka	DNP																				
*61	Soner Kadri Topaloglu	10:00	2/6	33,3	2/2	100,0	0/4	0,0	2/3	66,7	0	1	1	1	3	0	0	0	3	0	-13	6
Team/Coach											0	0	0		0			0				
Totals		50:00	4/15	26,7	3/4	75,0	1/11	9,1	2/3	66,7	3	8	11	3	5	1	0	5	3	-13	11	

Coach: Erdogan Narin (TUR)

Assistant Coach(es):

EKOL LOJISTIK (EKO)

No	Name	Min	Field Goals		2 Points		3 Points		Free Throws		Rebounds			AS	TO	ST	BS	Fouls		+/-	PTS
			M/A	%	M/A	%	M/A	%	M/A	%	OR	DR	TOT					PF	FD		
*6	Kutluhan Ay	10:00	0/0	0,0	0/0	0,0	0/0	0,0	0/0	0,0	0	0	0	0	1	1	0	1	0	13	0
7	Murat Turkcelik	DNP																			
*8	Ahmet Demirhan	10:00	6/10	60,0	2/2	100,0	4/8	50,0	2/2	100,0	0	0	0	0	0	1	0	0	2	13	18
*11	Tunay Orhan Senin	10:00	1/4	25,0	1/4	25,0	0/0	0,0	1/2	50,0	1	2	3	3	1	1	0	0	2	13	3
*12	Ali Bayraktar (C)	10:00	0/0	0,0	0/0	0,0	0/0	0,0	0/0	0,0	1	5	6	2	0	0	0	2	1	13	0
33	Bora Bakir	DNP																			
*44	Muhammet Eren Kaya	10:00	1/3	33,3	0/0	0,0	1/3	33,3	0/0	0,0	0	2	2	0	0	2	0	0	0	13	3
78	Bahadir Gokhan Unal	DNP																			
Team/Coach											0	0	0		0			0			
Totals		50:00	8/17	47,1	3/6	50,0	5/11	45,5	3/4	75,0	2	9	11	5	2	5	0	3	5	13	24

	DHL	EKO
Points from Turnovers	2	5
Points in the Paint	6 (3/3) 100,0	4 (2/4) 50,0
Second Chance Points	0	1
Fast Break Points	5	7
Bench Points	0	0

	DHL	EKO
Biggest Lead	0 (0-0)	13 (1-14)
Biggest Scoring Run	6 (7-14)	11 (0-11)
Lead Changes		1
Times Tied		0
Time with Lead	00:00	09:38

Legend

No	Playing Number	Min	Minutes Played	M/A	Made Attempts	%	Shooting Percentage	OR	Offensive Rebounds
DR	Defensive Rebounds	TOT	Total Rebounds	AS	Assists	TO	Turnovers	ST	Steals
BS	Blocked Shots	BA	Blocks Against	PF	Personal Fouls	FD	Fouls Drawn	+/-	Plus / Minus
EF	Efficiency	PTS	Points	*	Game Starters	(c)	Captain	DNP	Did Not Play

DHL EXPRESS 52 – 76 EKOL LOJISTIK
(11-24, 12-28, 29-24)

		Q1		Q2		Q3	
Scoring by 5 Minute intervals	DHL	0	11	19	23	35	52
	EKO	11	24	40	52	65	76

Coach: Neset Seckin Piker

Assistant Coach(es):

DHL EXPRESS (DHL)

No	Name	Min	Field Goals		2 Points		3 Points		Free Throws		Rebounds			AS	TO	ST	BS	Fouls		+/-	PTS	
			M/A	%	M/A	%	M/A	%	M/A	%	OR	DR	TOT					PF	FD			
1	Cagdas Olcay Altunkaya	15:26	2/4	50,0	1/1	100,0	1/3	33,3	0/0	0,0	1	2	3	1	0	0	0	0	0	0	-21	5
2	Onur Sari	DNP																				
5	Anil Altintoprak	03:46	0/1	0,0	0/1	0,0	0/0	0,0	0/0	0,0	0	0	0	0	0	0	0	1	0	-6	0	
*6	Baris Candan	13:45	1/8	12,5	0/1	0,0	1/7	14,3	0/0	0,0	0	3	3	0	0	0	0	0	1	-19	3	
*7	A Serdar Dilmen (C)	12:46	0/0	0,0	0/0	0,0	0/0	0,0	0/0	0,0	0	3	3	0	0	0	0	1	0	-18	0	
*8	Kaan Sahinkaya	17:39	4/8	50,0	3/4	75,0	1/4	25,0	0/0	0,0	1	0	1	2	3	2	0	3	0	-22	9	
9	Cihan Dogan	03:51	0/1	0,0	0/1	0,0	0/0	0,0	0/0	0,0	0	1	1	0	0	0	0	2	0	-7	0	
10	Mustafa Giray Cavdar	DNP																				
11	Kemal Can Diz	03:23	0/0	0,0	0/0	0,0	0/0	0,0	0/0	0,0	0	0	0	0	0	0	0	0	0	-4	0	
*24	Kaan Ustundag	10:49	0/0	0,0	0/0	0,0	0/0	0,0	0/0	0,0	2	2	4	0	0	0	0	1	0	-18	0	
55	Muhammed Coka	DNP																				
*61	Soner Kadri Topaloglu	18:35	2/9	22,2	2/3	66,7	0/6	0,0	2/3	66,7	0	2	2	4	4	0	0	2	4	-30	6	
Team/Coach											0	1	1	1				0				
Totals		100:00	9/31	29,0	6/11	54,5	3/20	15,0	2/3	66,7	4	14	18	7	8	2	0	10	5	-29	23	

Coach: Erdogan Narin (TUR)

Assistant Coach(es):

EKOL LOJISTIK (EKO)

No	Name	Min	Field Goals		2 Points		3 Points		Free Throws		Rebounds			AS	TO	ST	BS	Fouls		+/-	PTS
			M/A	%	M/A	%	M/A	%	M/A	%	OR	DR	TOT					PF	FD		
*6	Kutluhan Ay	20:00	0/0	0,0	0/0	0,0	0/0	0,0	0/0	0,0	2	0	2	0	1	1	0	1	0	29	0
7	Murat Turkcelik	06:37	1/1	100,0	0/0	0,0	1/1	100,0	0/0	0,0	0	0	0	0	0	0	0	2	0	12	3
*8	Ahmet Demirhan	20:00	8/15	53,3	2/3	66,7	6/12	50,0	4/4	100,0	0	1	1	5	0	2	0	4	4	29	26
*11	Tunay Orhan Senin	20:00	5/10	50,0	5/10	50,0	0/0	0,0	3/6	50,0	2	4	6	4	1	2	0	5	5	29	13
*12	Ali Bayraktar (C)	13:23	1/1	100,0	1/1	100,0	0/0	0,0	0/0	0,0	1	8	9	4	0	0	1	2	1	17	2
33	Bora Bakir	DNP																			
*44	Muhammet Eren Kaya	20:00	3/7	42,9	1/1	100,0	2/6	33,3	0/0	0,0	0	5	5	1	1	2	0	0	0	29	8
78	Bahadir Gokhan Unal	DNP																			
Team/Coach											0	0	0	0				0			
Totals		100:00	18/34	52,9	9/15	60,0	9/19	47,4	7/10	70,0	5	18	23	14	3	7	1	5	10	29	52

	DHL	EKO
Points from Turnovers	4	10
Points in the Paint	10 (5/8) 62,5	16 (8/12) 66,7
Second Chance Points	0	6
Fast Break Points	7	10
Bench Points	5	3

	DHL	EKO
Biggest Lead	0 (0-0)	29 (23-52)
Biggest Scoring Run	6 (7-14)	11 (0-11)
Lead Changes		1
Times Tied		0
Time with Lead	00:00	19:38

Legend

No	Playing Number	Min	Minutes Played	M/A	Made Attempts	%	Shooting Percentage	OR	Offensive Rebounds
DR	Defensive Rebounds	TOT	Total Rebounds	AS	Assists	TO	Turnovers	ST	Steals
BS	Blocked Shots	BA	Blocks Against	PF	Personal Fouls	FD	Fouls Drawn	+/-	Plus / Minus
EF	Efficiency	PTS	Points	*	Game Starters	(c)	Captain	DNP	Did Not Play

DHL EXPRESS 52 – 76 EKOL LOJISTIK
(11-24, 12-28, 29-24)

		Q1		Q2		Q3	
Scoring by 5 Minute intervals	DHL	0	11	19	23	35	52
	EKO	11	24	40	52	65	76

Coach: Neset Seckin Piker

Assistant Coach(es):

DHL EXPRESS (DHL)

No	Name	Min	Field Goals		2 Points		3 Points		Free Throws		Rebounds			AS	TO	ST	BS	Fouls		+/-	PTS
			M/A	%	M/A	%	M/A	%	M/A	%	OR	DR	TOT					PF	FD		
1	Cagdas Olcay Altunkaya	25:26	3/6	50,0	2/2	100,0	1/4	25,0	0/0	0,0	1	4	5	7	0	1	0	0	1	-16	7
2	Onur Sari	00:55	0/0	0,0	0/0	0,0	0/0	0,0	0/0	0,0	0	0	0	0	0	0	1	0	0	-3	0
5	Anil Altintoprak	09:27	3/4	75,0	3/4	75,0	0/0	0,0	0/0	0,0	0	0	0	0	0	0	3	0	-3	6	
*6	Baris Candan	18:04	2/10	20,0	0/1	0,0	2/9	22,2	0/0	0,0	0	3	3	0	0	0	0	1	-17	6	
*7	A Serdar Dilmen (C)	17:05	0/0	0,0	0/0	0,0	0/0	0,0	0/0	0,0	0	4	4	0	1	0	0	2	0	-16	0
*8	Kaan Sahinkaya	24:34	7/14	50,0	4/8	50,0	3/6	50,0	0/0	0,0	1	1	2	2	3	2	0	3	0	-12	17
9	Cihan Dogan	03:51	0/1	0,0	0/1	0,0	0/0	0,0	0/0	0,0	0	1	1	0	0	0	0	2	0	-7	0
10	Mustafa Giray Cavdar	05:34	1/1	100,0	0/0	0,0	1/1	100,0	0/0	0,0	0	0	0	0	0	0	0	0	6	3	
11	Kemal Can Diz	03:23	0/0	0,0	0/0	0,0	0/0	0,0	0/0	0,0	0	0	0	0	0	0	0	0	0	-4	0
*24	Kaan Ustundag	13:17	0/0	0,0	0/0	0,0	0/0	0,0	0/0	0,0	2	2	4	0	0	0	0	1	0	-23	0
55	Muhammed Coka	03:13	0/0	0,0	0/0	0,0	0/0	0,0	0/0	0,0	0	0	0	0	0	0	0	1	0	8	0
*61	Soner Kadri Topaloglu	25:11	4/11	36,4	3/4	75,0	1/7	14,3	4/8	50,0	0	2	2	5	4	0	0	2	7	-33	13
Team/Coach											0	3	3		1			0			
Totals		150:00	20/47	42,6	12/20	60,0	8/27	29,6	4/8	50,0	4	20	24	14	9	3	1	14	9	-24	52

Coach: Erdogan Narin (TUR)

Assistant Coach(es):

EKOL LOJISTIK (EKO)

No	Name	Min	Field Goals		2 Points		3 Points		Free Throws		Rebounds			AS	TO	ST	BS	Fouls		+/-	PTS
			M/A	%	M/A	%	M/A	%	M/A	%	OR	DR	TOT					PF	FD		
*6	Kutluhan Ay	30:00	0/3	0,0	0/2	0,0	0/1	0,0	0/0	0,0	3	1	4	1	1	1	0	1	1	24	0
7	Murat Turkelcelik	14:31	1/4	25,0	0/2	0,0	1/2	50,0	0/0	0,0	0	0	0	0	0	1	0	4	0	7	3
*8	Ahmet Demirhan	30:00	12/19	63,2	2/3	66,7	10/16	62,5	4/4	100,0	0	2	2	7	2	2	0	4	24	38	
*11	Tunay Orhan Senin	30:00	9/14	64,3	9/14	64,3	0/0	0,0	5/8	62,5	2	7	9	4	2	2	0	2	8	24	23
*12	Ali Bayraktar (C)	13:23	1/1	100,0	1/1	100,0	0/0	0,0	0/0	0,0	1	8	9	4	0	0	1	2	1	17	2
33	Bora Bakir	DNP																			
*44	Muhammet Eren Kaya	30:00	4/12	33,3	2/2	100,0	2/10	20,0	0/0	0,0	1	5	6	6	1	2	0	0	24	10	
78	Bahadir Gokhan Unal	02:06	0/0	0,0	0/0	0,0	0/0	0,0	0/0	0,0	1	0	1	0	0	0	0	0	0	0	0
Team/Coach											0	0	0		0			0			
Totals		150:00	27/53	50,9	14/24	58,3	13/29	44,8	9/12	75,0	8	23	31	22	6	8	1	9	14	24	76

	DHL	EKO
Points from Turnovers	9	12
Points in the Paint	18 (9/13) 69,2	24 (12/18) 66,7
Second Chance Points	0	12
Fast Break Points	9	10
Bench Points	16	3

	DHL	EKO
Biggest Lead	0 (0-0)	32 (36-68)
Biggest Scoring Run	11 (50-71)	11 (0-11)
Lead Changes		1
Times Tied		0
Time with Lead	00:00	29:38

Legend

No Playing Number	Min Minutes Played	M/A Made Attempts	% Shooting Percentage	OR Offensive Rebounds
DR Defensive Rebounds	TOT Total Rebounds	AS Assists	TO Turnovers	ST Steals
BS Blocked Shots	BA Blocks Against	PF Personal Fouls	FD Fouls Drawn	+/- Plus / Minus
EF Efficiency	PTS Points	* Game Starters	(c) Captain	DNP Did Not Play

DHL EXPRESS 62 – 101 EKOL LOJISTIK
(11-24, 12-28, 29-24, 10-25)

Game No.: 4760281

Attendance: 99

Game Duration: 01:11

Report Generated: Sun 20 Feb 2022 14:04

Scoring by 5 Minute intervals

	Q1		Q2		Q3		Q4	
DHL	0	11	19	23	35	52	56	62
EKO	11	24	40	52	65	76	92	101

Coach: Neset Seckin Piker

Assistant Coach(es):

DHL EXPRESS (DHL)

No	Name	Min	Field Goals		2 Points		3 Points		Free Throws		Rebounds			AS	TO	ST	BS	Fouls		+/-	PTS
			M/A	%	M/A	%	M/A	%	M/A	%	OR	DR	TOT					PF	FD		
1	Cagdas Olcay Altunkaya	29:25	4/9	44,4	3/4	75,0	1/5	20,0	0/0	0,0	1	4	5	7	0	1	0	1	1	-25	9
2	Onur Sari	04:54	0/2	0,0	0/0	0,0	0/2	0,0	0/0	0,0	0	0	0	0	1	0	1	0	0	-12	0
5	Anil Altintoprak	17:44	3/6	50,0	3/6	50,0	0/0	0,0	0/0	0,0	0	2	2	2	0	1	0	3	1	-12	6
*6	Baris Candan	18:04	2/10	20,0	0/1	0,0	2/9	22,2	0/0	0,0	0	3	3	0	0	0	0	0	1	-17	6
*7	A Serdar Dilmen (C)	17:05	0/0	0,0	0/0	0,0	0/0	0,0	0/0	0,0	0	4	4	0	1	0	0	2	0	-16	0
*8	Kaan Sahinkaya	28:46	8/15	53,3	5/9	55,6	3/6	50,0	0/0	0,0	1	1	2	2	3	2	0	3	0	-21	19
9	Cihan Dogan	09:52	0/3	0,0	0/1	0,0	0/2	0,0	0/0	0,0	0	3	3	0	0	0	0	2	0	-13	0
10	Mustafa Giray Cavdar	06:36	1/1	100,0	0/0	0,0	1/1	100,0	0/0	0,0	0	1	1	0	0	0	0	0	0	6	3
11	Kemal Can Diz	08:22	1/2	50,0	0/0	0,0	1/2	50,0	0/0	0,0	0	0	0	1	1	0	0	0	0	-10	3
*24	Kaan Ustundag	19:18	0/1	0,0	0/1	0,0	0/0	0,0	0/0	0,0	2	3	5	0	0	0	0	2	0	-29	0
55	Muhammed Coka	07:12	0/0	0,0	0/0	0,0	0/0	0,0	0/0	0,0	0	1	1	0	0	0	0	1	0	-1	0
*61	Soner Kadri Topaloglu	32:42	5/14	35,7	3/5	60,0	2/9	22,2	4/8	50,0	0	2	2	5	5	0	1	3	8	-45	16
Team/Coach											0	4	4		1			0			
Totals		200:00	24/63	38,1	14/27	51,9	10/36	27,8	4/8	50,0	4	28	32	17	12	4	2	17	11	-39	62

Coach: Erdogan Narin (TUR)

Assistant Coach(es):

EKOL LOJISTIK (EKO)

No	Name	Min	Field Goals		2 Points		3 Points		Free Throws		Rebounds			AS	TO	ST	BS	Fouls		+/-	PTS
			M/A	%	M/A	%	M/A	%	M/A	%	OR	DR	TOT					PF	FD		
*6	Kutluhan Ay	33:59	0/3	0,0	0/2	0,0	0/1	0,0	0/0	0,0	3	1	4	1	1	1	0	2	1	33	0
7	Murat Turckelik	20:32	1/5	20,0	0/3	0,0	1/2	50,0	0/0	0,0	0	0	0	1	0	2	0	4	0	13	3
*8	Ahmet Demirhan	40:00	16/26	61,5	3/5	60,0	13/21	61,9	5/7	71,4	0	7	7	9	2	2	0	7	39	50	
*11	Tunay Orhan Senin	40:00	12/19	63,2	12/19	63,2	0/0	0,0	5/8	62,5	3	8	11	5	3	2	0	2	8	39	29
*12	Ali Bayraktar (C)	13:23	1/1	100,0	1/1	100,0	0/0	0,0	0/0	0,0	1	8	9	4	0	0	1	2	1	17	2
33	Bora Bakir	DNP																			
*44	Muhammet Eren Kaya	40:00	5/15	33,3	2/2	100,0	3/13	23,1	0/0	0,0	1	9	10	9	2	3	0	0	39	13	
78	Bahadir Gokhan Unal	12:06	2/3	66,7	2/3	66,7	0/0	0,0	0/0	0,0	2	0	2	0	0	0	0	1	0	15	4
Team/Coach											0	2	2		0			0			
Totals		200:00	37/72	51,4	20/35	57,1	17/37	45,9	10/15	66,7	10	35	45	29	8	10	1	11	17	39	101

	DHL	EKO
Points from Turnovers	11	17
Points in the Paint	22 (11/19) 57,9	34 (17/25) 68,0
Second Chance Points	0	12
Fast Break Points	11	14
Bench Points	21	7

	DHL	EKO
Biggest Lead	0 (0-0)	40 (59-99)
Biggest Scoring Run	11 (50-71)	11 (0-11)
Lead Changes		1
Times Tied		0
Time with Lead	00:00	39:38

Legend

No Playing Number	Min Minutes Played	M/A Made Attempts	% Shooting Percentage	OR Offensive Rebounds
DR Defensive Rebounds	TOT Total Rebounds	AS Assists	TO Turnovers	ST Steals
BS Blocked Shots	BA Blocks Against	PF Personal Fouls	FD Fouls Drawn	+/- Plus / Minus
EF Efficiency	PTS Points	* Game Starters	(c) Captain	DNP Did Not Play

DHL EXPRESS 62 – 101 EKOL LOJISTIK
(11-24, 12-28, 29-24, 10-25)

		Q1		Q2		Q3		Q4	
Scoring by 5 Minute intervals	DHL	0	11	19	23	35	52	56	62
	EKO	11	24	40	52	65	76	92	101

Quarter 1

Quarter Starters:

DHL	6 Candan B	7 Dilmen A	8 Sahinkaya K	24 Ustundag K	61 Topaloglu S
EKO	6 Ay K	8 Demirhan A	11 Senin T	12 Bayraktar A	44 Kaya M

Game Time	DHL	Score	Diff	EKO
09:59				11 SENİN T jumpball won
09:59	24 USTUNDAG K jumpball lost			
09:47				8 DEMİRHAN A 3pt FG , jump shot missed
09:44				12 BAYRAKTAR A offensive rebound (1)
09:38	7 DİLMEN A foul shooting (1 - 1)			
09:38				11 SENİN T foul received (1)
09:38		0-1	-1	11 SENİN T free throw 1 - 2 made (1)
09:38				11 SENİN T free throw 2 - 2 missed
09:38	7 DİLMEN A defensive rebound (1)			
09:17	8 SAHINKAYA K turnover bad pass (1)			
09:17				11 SENİN T steal (1)
09:10				8 DEMİRHAN A 3pt FG from turnover, jump shot missed
09:08				11 SENİN T offensive rebound (1)
09:08	8 SAHINKAYA K foul personal (1 - 2)			
09:08				11 SENİN T foul received (2)
08:59				6 AY K turnover travel (1)
08:49	6 CANDAN B 3pt FG from turnover, jump shot missed			
08:46				11 SENİN T defensive rebound (2)
08:31				44 KAYAM 3pt FG , jump shot missed
08:27	24 USTUNDAG K defensive rebound (1)			
08:12	8 SAHINKAYA K turnover bad pass (2)			
08:12				8 DEMİRHAN A steal (1)
07:58		0-4	-4	8 DEMİRHAN A 3pt FG from turnover, jump shot made (3)
07:58				11 SENİN T assist (1)
07:38	61 TOPALOGLU S turnover bad pass (1)			
07:38				44 KAYAM steal (1)
07:32				44 KAYAM 3pt FG from turnover, jump shot missed
07:26	7 DİLMEN A defensive rebound (2)			
07:20	6 CANDAN B 3pt FG , jump shot missed			
07:18				11 SENİN T defensive rebound (3)
07:07				11 SENİN T 2pt FG outside the paint, jump shot missed
07:05	7 DİLMEN A defensive rebound (3)			
06:52	61 TOPALOGLU S 3pt FG , jump shot missed			
06:49	24 USTUNDAG K offensive rebound (2)			
06:41	61 TOPALOGLU S 3pt FG second chance, jump shot missed			
06:38	8 SAHINKAYA K offensive rebound (1)			
06:32	6 CANDAN B 2pt FG second chance outside the paint, jump shot missed			
06:27				44 KAYAM defensive rebound (1)

Scoring by 5 Minute intervals		Q1		Q2		Q3		Q4	
DHL		0	11	19	23	35	52	56	62
EKO		11	24	40	52	65	76	92	101

Game Time	DHL	Score	Diff	EKO
06:20		0-6	-6	8 DEMIRHAN A 2pt FG fast break in the paint, floating jump shot made (5)
06:19	Timeout Full			
06:01	6 CANDAN B 3pt FG , jump shot missed			
05:59				12 BAYRAKTAR A defensive rebound (2)
05:43		0-8	-8	11 SENİN T 2pt FG outside the paint, jump shot made (3)
05:43				12 BAYRAKTAR A assist (1)
05:26	6 CANDAN B substitution out			
05:26	1 ALTUNKAYA C substitution in			
05:18	61 TOPALOGLU S 3pt FG , jump shot missed			
05:16				12 BAYRAKTAR A defensive rebound (3)
05:06		0-11	-11	8 DEMIRHAN A 3pt FG , jump shot made (8)
04:49				12 BAYRAKTAR A foul shooting (1 - 1)
04:49	61 TOPALOGLU S foul received (1)			
04:49	61 TOPALOGLU S free throw 1 - 2 made (1)	1-11	-10	
04:49	61 TOPALOGLU S free throw 2 - 2 missed			
04:48				12 BAYRAKTAR A defensive rebound (4)
04:38	8 SAHINKAYAK foul personal (2 - 3)			
04:38				8 DEMIRHAN A foul received (1)
04:26	24 USTUNDAG K foul personal (1 - 4)			
04:26				12 BAYRAKTAR A foul received (1)
04:21		1-14	-13	8 DEMIRHAN A 3pt FG , jump shot made (11)
04:21				12 BAYRAKTAR A assist (2)
04:06				6 AY K foul personal (1 - 2)
04:06	61 TOPALOGLU S foul received (2)			
03:54	8 SAHINKAYAK 3pt FG , jump shot made (3)	4-14	-10	
03:54	1 ALTUNKAYA C assist (1)			
03:45				11 SENİN T 2pt FG in the paint, alleyoop missed
03:42	24 USTUNDAG K defensive rebound (3)			
03:39	61 TOPALOGLU S 2pt FG fast break in the paint, layup made (3)	6-14	-8	
03:39				12 BAYRAKTAR A foul shooting (2 - 3)
03:39	61 TOPALOGLU S foul received (3)			
03:39	24 USTUNDAG K substitution out			
03:39	6 CANDAN B substitution in			
03:39	61 TOPALOGLU S free throw fast break 1 - 1 made (4)	7-14	-7	
03:19		7-17	-10	44 KAYAM 3pt FG , jump shot made (3)
03:19				11 SENİN T assist (2)
03:01	8 SAHINKAYAK 2pt FG in the paint, jump shot made (5)	9-17	-8	
03:01	61 TOPALOGLU S assist (1)			
02:36				11 SENİN T turnover ball handling (1)
02:36	8 SAHINKAYAK steal (1)			
02:31	61 TOPALOGLU S 2pt FG fast break from turnover in the paint, jump shot made (6)	11-17	-6	
02:31	8 SAHINKAYAK assist (1)			
02:21	8 SAHINKAYAK foul personal (3 - 5)			
02:21				8 DEMIRHAN A foul received (2)

DHL EXPRESS 62 – 101 EKOL LOJISTIK
(11-24, 12-28, 29-24, 10-25)

		Q1		Q2		Q3		Q4	
Scoring by 5 Minute intervals	DHL	0	11	19	23	35	52	56	62
	EKO	11	24	40	52	65	76	92	101

Game Time	DHL	Score	Diff	EKO
02:21	8 SAHINKAYAK substitution out			
02:21	5 ALTINTOPRAK A substitution in			
02:21		11-18	-7	8 DEMIRHAN A free throw 1 - 2 made (12)
02:21		11-19	-8	8 DEMIRHAN A free throw 2 - 2 made (13)
02:00	6 CANDAN B 3pt FG , jump shot missed			
01:57				12 BAYRAKTAR A defensive rebound (5)
01:49				8 DEMIRHAN A 3pt FG , jump shot missed
01:45	1 ALTUNKAYAC defensive rebound (1)			
01:39	61 TOPALOGLU S turnover bad pass (2)			
01:39				44 KAYAM steal (2)
01:33				11 SENİN T 2pt FG from turnover in the paint, jump shot missed
01:31	6 CANDAN B defensive rebound (1)			
01:31	jump ball situation			
01:24	61 TOPALOGLU S 3pt FG , jump shot missed			
01:22				12 BAYRAKTAR A defensive rebound (6)
01:16				8 DEMIRHAN A 3pt FG , jump shot missed
01:13	61 TOPALOGLU S defensive rebound (1)			
00:56	61 TOPALOGLU S turnover bad pass (3)			
00:56				6 AYK steal (1)
00:51		11-21	-10	8 DEMIRHAN A 2pt FG fast break from turnover in the paint, jump shot made (15)
00:51				11 SENİN T assist (3)
00:26	6 CANDAN B 3pt FG , jump shot missed			
00:24	1 ALTUNKAYAC offensive rebound (2)			
00:15	1 ALTUNKAYAC 3pt FG second chance, jump shot missed			
00:13				44 KAYAM defensive rebound (2)
00:08		11-24	-13	8 DEMIRHAN A 3pt FG fast break, jump shot made (18)

DHL EXPRESS 62 – 101 EKOL LOJISTIK
(11-24, 12-28, 29-24, 10-25)

		Q1		Q2		Q3		Q4	
Scoring by 5 Minute intervals	DHL	0	11	19	23	35	52	56	62
	EKO	11	24	40	52	65	76	92	101

Quarter 2

Quarter Starters:

DHL	1 Altunkaya C	5 Altintoprak A	6 Candan B	8 Sahinkaya K	11 DizK
EKO	6 AyK	8 Demirhan A	11 Senin T	12 Bayraktar A	44 Kaya M

Game Time	DHL	Score	Diff	EKO
10:00	7 DİLMEN A substitution out			
10:00	61 TOPALOGLU S substitution out			
10:00	8 SAHINKAYAK substitution in			
10:00	11 DİZ K substitution in			
09:39		11-26	-15	12 BAYRAKTAR A 2pt FG in the paint, jump shot made (2)
09:39				8 DEMİRHAN A assist (1)
09:21	5 ALTİNTOPRAK A 2pt FG in the paint, jump shot blocked			
09:21				12 BAYRAKTAR A block (1)
09:18				12 BAYRAKTAR A defensive rebound (7)
09:11				8 DEMİRHAN A 3pt FG , jump shot missed
09:08	1 ALTUNKAYA C defensive rebound (3)			
08:56	6 CANDAN B 3pt FG , jump shot made (3)	14-26	-12	
08:56	8 SAHINKAYAK assist (2)			
08:35	5 ALTİNTOPRAK A foul shooting (1 - 1)			
08:35				11 SENİN T foul received (3)
08:35	5 ALTİNTOPRAK A substitution out			
08:35	61 TOPALOGLU S substitution in			
08:35		14-27	-13	11 SENİN T free throw 1 - 2 made (4)
08:35				12 BAYRAKTAR A assist (3)
08:35				11 SENİN T free throw 2 - 2 missed
08:34				6 AY K offensive rebound (1)
08:25				44 KAYAM 3pt FG second chance, jump shot missed
08:22				11 SENİN T offensive rebound (4)
08:20		14-29	-15	11 SENİN T 2pt FG second chance in the paint, layup made (6)
08:03	61 TOPALOGLU S 3pt FG , jump shot missed			
08:01				12 BAYRAKTAR A defensive rebound (8)
07:56		14-31	-17	44 KAYAM 2pt FG fast break in the paint, layup made (5)
07:56				11 SENİN T assist (4)
07:37	1 ALTUNKAYA C 3pt FG , jump shot made (3)	17-31	-14	
07:37	61 TOPALOGLU S assist (2)			
07:13				44 KAYAM 3pt FG , jump shot missed
07:10				6 AY K offensive rebound (2)
07:04		17-34	-17	8 DEMİRHAN A 3pt FG second chance, jump shot made (21)
07:04				12 BAYRAKTAR A assist (4)
06:44	8 SAHINKAYAK 2pt FG in the paint, layup missed			
06:42				12 BAYRAKTAR A defensive rebound (9)
06:37	61 TOPALOGLU S foul shooting (1 - 2)			
06:37				11 SENİN T foul received (4)
06:37	11 DİZ K substitution out			

DHL EXPRESS 62 – 101 EKOL LOJISTIK
(11-24, 12-28, 29-24, 10-25)

		Q1		Q2		Q3		Q4	
Scoring by 5 Minute intervals	DHL	0	11	19	23	35	52	56	62
	EKO	11	24	40	52	65	76	92	101

Game Time	DHL	Score	Diff	EKO
06:37	9 DOGAN C substitution in			
06:37				12 BAYRAKTAR A substitution out
06:37				7 TURKCELİK M substitution in
06:37		17-35	-18	11 SENİN T free throw fast break 1 - 2 made (7)
06:37				8 DEMİRHAN A assist (2)
06:37				11 SENİN T free throw fast break 2 - 2 missed
06:36	6 CANDAN B defensive rebound (2)			
06:26	8 SAHİNKAYAK 2pt FG in the paint, layup made (7)	19-35	-16	
06:26	61 TOPALOĞLU S assist (3)			
06:07				11 SENİN T 2pt FG in the paint, jump shot missed
06:04	6 CANDAN B defensive rebound (3)			
06:03				7 TURKCELİK M foul personal (1 - 1)
06:03	6 CANDAN B foul received (1)			
05:57	61 TOPALOĞLU S 2pt FG in the paint, layup missed			
05:54				8 DEMİRHAN A defensive rebound (1)
05:52	9 DOGAN C foul personal (1 - 3)			
05:52				8 DEMİRHAN A foul received (3)
05:47		19-37	-18	11 SENİN T 2pt FG in the paint, driving layup made (9)
05:31	6 CANDAN B 3pt FG , jump shot missed			
05:29				11 SENİN T defensive rebound (5)
05:12		19-40	-21	44 KAYAM 3pt FG , jump shot made (8)
05:12				8 DEMİRHAN A assist (3)
04:53	9 DOGAN C 2pt FG outside the paint, jump shot missed			
04:49				44 KAYAM defensive rebound (3)
04:43				44 KAYAM turnover bad pass (1)
04:43	8 SAHİNKAYAK steal (2)			
04:40	8 SAHİNKAYAK 2pt FG fast break from turnover outside the paint, jump shot made (9)	21-40	-19	
04:28	6 CANDAN B substitution out			
04:28	24 USTUNDAG K substitution in			
04:25		21-43	-22	8 DEMİRHAN A 3pt FG , jump shot made (24)
04:25				44 KAYAM assist (1)
04:08	8 SAHİNKAYAK 3pt FG , jump shot missed			
04:06				44 KAYAM defensive rebound (4)
03:55				8 DEMİRHAN A 3pt FG , jump shot missed
03:53	9 DOGAN C defensive rebound (1)			
03:49				7 TURKCELİK M foul personal (2 - 2)
03:49	61 TOPALOĞLU S foul received (4)			
03:49	Timeout Full			
03:34	8 SAHİNKAYAK turnover bad pass (3)			
03:34				11 SENİN T steal (2)
03:31	61 TOPALOĞLU S foul personal (2 - 4)			
03:31				11 SENİN T foul received (5)
03:15	9 DOGAN C foul personal (2 - 5)			
03:15				8 DEMİRHAN A foul received (4)

DHL EXPRESS 62 – 101 EKOL LOJISTIK
(11-24, 12-28, 29-24, 10-25)

		Q1		Q2		Q3		Q4	
Scoring by 5 Minute intervals	DHL	0	11	19	23	35	52	56	62
	EKO	11	24	40	52	65	76	92	101

Game Time	DHL	Score	Diff	EKO
03:15		21-44	-23	8 DEMİRHAN A free throw 1 - 2 made (25)
03:15		21-45	-24	8 DEMİRHAN A free throw 2 - 2 made (26)
02:53	8 SAHINKAYAK 3pt FG , jump shot missed			
02:50				11 SENİN T defensive rebound (6)
02:46	9 DOGAN C substitution out			
02:46	7 DİLMEN A substitution in			
02:34				11 SENİN T 2pt FG outside the paint, jump shot missed
02:32	61 TOPALOĞLU S defensive rebound (2)			
02:19	61 TOPALOĞLU S 3pt FG , jump shot missed			
02:14				44 KAYAM defensive rebound (5)
02:02		21-47	-26	11 SENİN T 2pt FG in the paint, dunk, made (11)
02:02				8 DEMİRHAN A assist (4)
01:42	61 TOPALOĞLU S turnover bad pass (4)			
01:42				8 DEMİRHAN A steal (2)
01:36				8 DEMİRHAN A 2pt FG from turnover in the paint, layup missed
01:35	defensive rebound (17)			
01:19	1 ALTUNKAYAC 2pt FG in the paint, jump shot made (5)	23-47	-24	
01:19	61 TOPALOĞLU S assist (4)			
00:51		23-49	-26	11 SENİN T 2pt FG in the paint, jump shot made (13)
00:24	1 ALTUNKAYAC 3pt FG , jump shot missed			
00:24	24 USTUNDAG K offensive rebound (4)			
00:24	turnover shot clock (8)			
00:06		23-52	-29	7 TURKCELİK M 3pt FG from turnover, jump shot made (3)
00:06				8 DEMİRHAN A assist (5)
00:00	8 SAHINKAYAK 3pt FG , jump shot missed			

DHL EXPRESS 62 – 101 EKOL LOJISTIK
(11-24, 12-28, 29-24, 10-25)

		Q1		Q2		Q3		Q4	
Scoring by 5 Minute intervals	DHL	0	11	19	23	35	52	56	62
	EKO	11	24	40	52	65	76	92	101

Quarter 3

Quarter Starters:

DHL	1 Altunkaya C	6 Candan B	7 Dilmen A	8 Sahinkaya K	61 Topaloglu S
EKO	6 AyK	7 Turkcelik M	8 Demirhan A	11 Senin T	44 Kaya M

Game Time	DHL	Score	Diff	EKO
10:00	24 USTUNDAG K substitution out			
10:00	6 CANDAN B substitution in			
09:55	8 SAHINKAYAK 2pt FG in the paint, layup missed			
09:55				8 DEMRHAN A defensive rebound (2)
09:55				6 AYK 3pt FG , jump shot missed
09:52	defensive rebound (19)			
09:32	8 SAHINKAYAK 2pt FG in the paint, jump shot made (11)	25-52	-27	
09:32	1 ALTUNKAYAC assist (2)			
09:13		25-54	-29	44 KAYAM 2pt FG in the paint, jump shot made (10)
09:13				8 DEMRHAN A assist (6)
08:59	61 TOPALOGLU S 2pt FG in the paint, jump shot made (8)	27-54	-27	
08:36				44 KAYAM 3pt FG , jump shot missed
08:33	8 SAHINKAYAK defensive rebound (2)			
08:23	6 CANDAN B 3pt FG , jump shot made (6)	30-54	-24	
08:23	61 TOPALOGLU S assist (5)			
08:05		30-57	-27	8 DEMRHAN A 3pt FG , jump shot made (29)
08:05				44 KAYAM assist (2)
07:47	8 SAHINKAYAK 2pt FG outside the paint, jump shot missed			
07:44				11 SENIN T defensive rebound (7)
07:41				7 TURKCELİK M 2pt FG in the paint, layup missed
07:38				44 KAYAM offensive rebound (6)
07:34		30-60	-30	8 DEMRHAN A 3pt FG second chance, jump shot made (32)
07:34				44 KAYAM assist (3)
07:18	61 TOPALOGLU S 3pt FG , jump shot made (11)	33-60	-27	
07:18	1 ALTUNKAYAC assist (3)			
07:02				44 KAYAM 3pt FG , jump shot missed
06:59	1 ALTUNKAYAC defensive rebound (4)			
06:47	6 CANDAN B 3pt FG , jump shot missed			
06:45				11 SENIN T defensive rebound (8)
06:29				8 DEMRHAN A turnover ball handling (1)
06:29	8 SAHINKAYAK substitution out			
06:29	10 CAVDAR M substitution in			
06:15	1 ALTUNKAYAC 3pt FG from turnover, jump shot missed			
06:12				6 AYK defensive rebound (3)
05:50				7 TURKCELİK M 3pt FG , jump shot missed
05:48	7 DILMEN A defensive rebound (4)			
05:45	7 DILMEN A turnover bad pass (1)			
05:45				7 TURKCELİK M steal (1)
05:41	6 CANDAN B substitution out			

DHL EXPRESS 62 – 101 EKOL LOJISTIK
(11-24, 12-28, 29-24, 10-25)

		Q1		Q2		Q3		Q4	
Scoring by 5 Minute intervals	DHL	0	11	19	23	35	52	56	62
	EKO	11	24	40	52	65	76	92	101

Game Time	DHL	Score	Diff	EKO
05:41	7 DİLMEN A substitution out			
05:41	5 ALTINTOPRAK A substitution in			
05:41	24 USTUNDAG K substitution in			
05:41	5 ALTINTOPRAK A substitution out			
05:41	7 DİLMEN A substitution in			
05:41	7 DİLMEN A foul personal (2 - 1)			
05:41				11 SENİN T foul received (6)
05:41	7 DİLMEN A substitution out			
05:41	5 ALTINTOPRAK A substitution in			
05:41		33-62	-29	11 SENİN T 2pt FG from turnover in the paint, dunk, made (15)
05:41				44 KAYAM assist (4)
05:35				11 SENİN T foul personal (1 - 1)
05:35	61 TOPALOĞLU S foul received (5)			
05:32	5 ALTINTOPRAK A 2pt FG outside the paint, jump shot made (2)	35-62	-27	
05:28		35-65	-30	8 DEMİRHAN A 3pt FG, jump shot made (35)
05:28				44 KAYAM assist (5)
04:57				7 TURKCELİK M foul shooting (3 - 2)
04:57	61 TOPALOĞLU S foul received (6)			
04:57	61 TOPALOĞLU S free throw 1 - 2 missed			
04:57	61 TOPALOĞLU S free throw 2 - 2 made (12)	36-65	-29	
04:34		36-68	-32	8 DEMİRHAN A 3pt FG, jump shot made (38)
04:34				44 KAYAM assist (6)
04:23				7 TURKCELİK M foul shooting (4 - 3)
04:23	61 TOPALOĞLU S foul received (7)			
04:23	61 TOPALOĞLU S free throw 1 - 3 missed			
04:23	61 TOPALOĞLU S free throw 2 - 3 missed			
04:23	61 TOPALOĞLU S free throw 3 - 3 made (13)	37-68	-31	
04:05				7 TURKCELİK M 2pt FG outside the paint, jump shot missed
04:02	defensive rebound (23)			
03:47	5 ALTINTOPRAK A 2pt FG in the paint, jump shot made (4)	39-68	-29	
03:47	1 ALTUNKAYA C assist (4)			
03:30		39-70	-31	11 SENİN T 2pt FG in the paint, jump shot made (17)
03:30				6 AYK assist (1)
03:24	5 ALTINTOPRAK A foul shooting (2 - 2)			
03:24				11 SENİN T foul received (7)
03:24		39-71	-32	11 SENİN T free throw 1 - 1 made (18)
03:24	61 TOPALOĞLU S substitution out			
03:24	8 SAHINKAYA K substitution in			
03:13	24 USTUNDAG K substitution out			
03:13	55 COKAM substitution in			
03:10	10 CAVDAR M 3pt FG, jump shot made (3)	42-71	-29	
03:10	1 ALTUNKAYA C assist (5)			
02:49				6 AYK 2pt FG outside the paint, jump shot missed
02:47	1 ALTUNKAYA C defensive rebound (5)			

DHL EXPRESS 62 – 101 EKOL LOJISTIK
(11-24, 12-28, 29-24, 10-25)

		Q1		Q2		Q3		Q4	
Scoring by 5 Minute intervals	DHL	0	11	19	23	35	52	56	62
	EKO	11	24	40	52	65	76	92	101

Game Time	DHL	Score	Diff	EKO
02:36	8 SAHINKAYAK 3pt FG , jump shot made (14)	45-71	-26	
02:36	1 ALTUNKAYAC assist (6)			
02:17				8 DEMRHAN A turnover bad pass (2)
02:17	1 ALTUNKAYAC steal (1)			
02:14	1 ALTUNKAYAC 2pt FG fast break from turnover in the paint, layup made (7)	47-71	-24	
02:06				11 SENİN T foul offensive (2 - 4)
02:06	1 ALTUNKAYAC foul received (1)			
02:06				11 SENİN T turnover offensive (2)
02:06				7 TURKCELİK M substitution out
02:06				78 UNAL B substitution in
01:59	8 SAHINKAYAK 3pt FG from turnover, jump shot made (17)	50-71	-21	
01:59	1 ALTUNKAYAC assist (7)			
01:37		50-73	-23	11 SENİN T 2pt FG outside the paint, jump shot made (20)
01:18	5 ALTİNTOPRAK A 2pt FG outside the paint, floating jump shot made (6)	52-73	-21	
01:04				44 KAYAM 3pt FG , jump shot missed
01:02				78 UNAL B offensive rebound (1)
00:55	5 ALTİNTOPRAK A foul personal (3 - 3)			
00:55				6 AY K foul received (1)
00:54	10 CAVDAR M substitution out			
00:54	2 SARI O substitution in			
00:45		52-75	-23	11 SENİN T 2pt FG second chance in the paint, jump shot made (22)
00:45				8 DEMRHAN A assist (7)
00:45	55 COKAM foul shooting (1 - 4)			
00:45				11 SENİN T foul received (8)
00:45		52-76	-24	11 SENİN T free throw 1 - 1 made (23)
00:24	8 SAHINKAYAK 2pt FG outside the paint, turnaround jump shot missed			
00:21				11 SENİN T defensive rebound (9)
00:04				44 KAYAM 3pt FG , jump shot missed
00:02				6 AY K offensive rebound (4)
00:02				6 AY K 2pt FG second chance in the paint, jump shot blocked
00:02	2 SARI O block (1)			

DHL EXPRESS 62 – 101 EKOL LOJISTIK
(11-24, 12-28, 29-24, 10-25)

		Q1		Q2		Q3		Q4	
Scoring by 5 Minute intervals	DHL	0	11	19	23	35	52	56	62
	EKO	11	24	40	52	65	76	92	101

Quarter 4

Quarter Starters:

DHL	1 Altunkaya C	2 Sari O	5 Altintoprak A	8 Sahinkaya K	55 Coka M
EKO	6 Ay K	8 Demirhan A	11 Senin T	44 Kaya M	78 Unal B

Game Time	DHL	Score	Diff	EKO
09:52				44 KAYAM turnover bad pass (2)
09:52	5 ALTINTOPRAK A steal (1)			
09:48	1 ALTUNKAYAC 2pt FG fast break from turnover in the paint, layup made (9)	54-76	-22	
09:48	5 ALTINTOPRAK A assist (1)			
09:31		54-79	-25	8 DEMIRHAN A 3pt FG , jump shot made (41)
09:31				44 KAYAM assist (7)
09:14	2 SARI O 3pt FG , jump shot missed			
09:13				defensive rebound (32)
09:03		54-81	-27	11 SENIN T 2pt FG in the paint, dunk, made (25)
09:03				44 KAYAM assist (8)
08:44	8 SAHINKAYAK 2pt FG in the paint, floating jump shot made (19)	56-81	-25	
08:18		56-83	-27	8 DEMIRHAN A 2pt FG in the paint, floating jump shot made (43)
07:58				6 AYK foul personal (2 - 1)
07:58	5 ALTINTOPRAK A foul received (1)			
07:48	2 SARI O 3pt FG , jump shot missed			
07:46				8 DEMIRHAN A defensive rebound (3)
07:31				11 SENIN T turnover travel (3)
07:31	5 ALTINTOPRAK A substitution out			
07:31	61 TOPALOGLU S substitution in			
07:19	2 SARI O turnover bad pass (1)			
07:15		56-86	-30	8 DEMIRHAN A 3pt FG from turnover, jump shot made (46)
06:57	61 TOPALOGLU S 2pt FG in the paint, jump shot missed			
06:55				8 DEMIRHAN A defensive rebound (4)
06:46				11 SENIN T 2pt FG in the paint, jump shot missed
06:43	55 COKAM defensive rebound (1)			
06:36	1 ALTUNKAYAC 2pt FG in the paint, jump shot missed			
06:34				8 DEMIRHAN A defensive rebound (5)
06:24		56-89	-33	44 KAYAM 3pt FG , jump shot made (13)
06:24				8 DEMIRHAN A assist (8)
06:06	1 ALTUNKAYAC 3pt FG , jump shot missed			
06:03				44 KAYAM defensive rebound (7)
06:01	1 ALTUNKAYAC foul personal (1 - 1)			
06:01				8 DEMIRHAN A foul received (5)
06:01	1 ALTUNKAYAC substitution out			
06:01	2 SARI O substitution out			
06:01	55 COKAM substitution out			
06:01	9 DOGAN C substitution in			
06:01	11 DIZ K substitution in			

DHL EXPRESS 62 – 101 EKOL LOJISTIK
(11-24, 12-28, 29-24, 10-25)

		Q1		Q2		Q3		Q4	
Scoring by 5 Minute intervals	DHL	0	11	19	23	35	52	56	62
	EKO	11	24	40	52	65	76	92	101

Game Time	DHL	Score	Diff	EKO
06:01	24 USTUNDAG K substitution in			
06:01				6 AY K substitution out
06:01				7 TURKCELİK M substitution in
05:48	61 TOPALOGLU S foul shooting (3 - 2)			
05:48				8 DEMRHAN A foul received (6)
05:48	8 SAHINKAYAK substitution out			
05:48	5 ALTINTOPRAK A substitution in			
05:48				8 DEMRHAN A free throw 1 - 3 missed
05:48		56-90	-34	8 DEMRHAN A free throw 2 - 3 made (47)
05:48				8 DEMRHAN A free throw 3 - 3 missed
05:48	5 ALTINTOPRAK A defensive rebound (1)			
05:30	61 TOPALOGLU S 3pt FG , jump shot missed			
05:28				defensive rebound (37)
05:21		56-92	-36	11 SENİN T 2pt FG fast break in the paint, alleyoop made (27)
05:21				8 DEMRHAN A assist (9)
05:00	11 DİZ K 3pt FG , jump shot made (3)	59-92	-33	
05:00	5 ALTINTOPRAK A assist (2)			
04:45		59-94	-35	78 UNAL B 2pt FG outside the paint, jump shot made (2)
04:45				7 TURKCELİK M assist (1)
04:28	11 DİZ K 3pt FG , jump shot missed			
04:26				11 SENİN T defensive rebound (10)
04:20				8 DEMRHAN A 2pt FG outside the paint, jump shot missed
04:17	5 ALTINTOPRAK A defensive rebound (2)			
04:13	5 ALTINTOPRAK A 2pt FG in the paint, jump shot missed			
04:11				8 DEMRHAN A defensive rebound (6)
03:58		59-97	-38	8 DEMRHAN A 3pt FG , jump shot made (50)
03:37				78 UNAL B foul personal (1 - 2)
03:37	61 TOPALOGLU S foul received (8)			
03:27	24 USTUNDAG K 2pt FG outside the paint, jump shot missed			
03:25				44 KAYAM defensive rebound (8)
03:17				44 KAYAM 3pt FG , jump shot missed
03:16	defensive rebound (28)			
03:08	11 DİZ K turnover bad pass (1)			
03:08				44 KAYAM steal (3)
03:08				44 KAYAM 3pt FG from turnover, jump shot missed
03:08				78 UNAL B offensive rebound (2)
03:08				7 TURKCELİK M 2pt FG from turnover second chance outside the paint, jump shot missed
03:08	9 DOGAN C defensive rebound (2)			
03:08	61 TOPALOGLU S turnover ball handling (5)			
03:08				7 TURKCELİK M steal (2)
03:02		59-99	-40	78 UNAL B 2pt FG fast break from turnover in the paint, jump shot made (4)
03:02				11 SENİN T assist (5)
01:50	5 ALTINTOPRAK A 2pt FG in the paint, jump shot missed			

DHL EXPRESS 62 – 101 EKOL LOJISTIK
(11-24, 12-28, 29-24, 10-25)

		Q1		Q2		Q3		Q4	
Scoring by 5 Minute intervals	DHL	0	11	19	23	35	52	56	62
	EKO	11	24	40	52	65	76	92	101

Game Time	DHL	Score	Diff	EKO
01:48				44 KAYAM defensive rebound (9)
01:34				78 UNAL B 2pt FG outside the paint, jump shot missed
01:32	9 DOGAN C defensive rebound (3)			
01:17	61 TOPALOGLU S 3pt FG , jump shot made (16)	62-99	-37	
01:17	11 DİZ K assist (1)			
01:03		62-101	-39	11 SENİN T 2pt FG in the paint, layup made (29)
01:03				44 KAYAM assist (9)
01:02	11 DİZ K substitution out			
01:02	10 CAVDAR M substitution in			
00:49	9 DOGAN C 3pt FG , jump shot missed			
00:46				44 KAYAM defensive rebound (10)
00:42				8 DEMRHAN A 3pt FG , jump shot missed
00:39				11 SENİN T offensive rebound (11)
00:39				11 SENİN T 2pt FG second chance in the paint, jump shot blocked
00:39	61 TOPALOGLU S block (1)			
00:35	10 CAVDAR M defensive rebound (1)			
00:26	9 DOGAN C 3pt FG , jump shot missed			
00:23				8 DEMRHAN A defensive rebound (7)
00:16				8 DEMRHAN A 3pt FG , jump shot missed
00:13	24 USTUNDAG K defensive rebound (5)			
00:10	24 USTUNDAG K foul personal (2 - 3)			
00:10				8 DEMRHAN A foul received (7)

Scoring by 5 Minute intervals

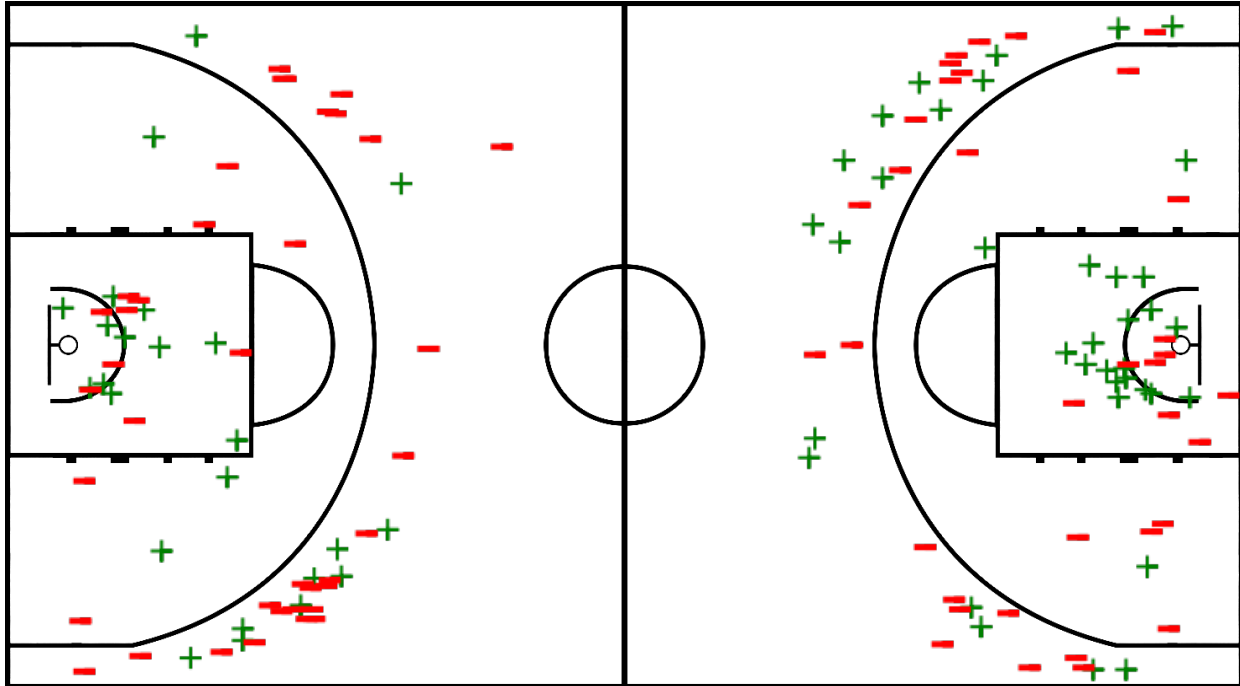
	Q1		Q2		Q3		Q4	
DHL	0	11	19	23	35	52	56	62
EKO	11	24	40	52	65	76	92	101

Players => All FG Types => All ; Results => All ;

Players => All FG Types => All ; Results => All ;

DHL EXPRESS

EKOL LOJISTIK



DHL EXPRESS	M/A	%
Field Goals	24/63	38
2 Points	14/27	52
3 Points	10/36	28
Free Throws	4/8	50

EKOL LOJISTIK	M/A	%
Field Goals	37/72	51
2 Points	20/35	57
3 Points	17/37	46
Free Throws	10/15	67